



GATE

Gifted and Talented Education
MICHIGAN STATE UNIVERSITY



2022-2023 PROGRAM GUIDE



Apply online at

gifted.msu.edu

Dear Families and Students,

Here's to 2022! As we continue to navigate in the wake of the pandemic, we are working diligently to continue to plan and expand future programming. We have enjoyed participating with GATE students virtually in a live Zoom synchronous format since March 2020 and have continuously worked to improve those offerings.

We are once again optimistic about the return to campus for the summer of 2022, but must continue to follow MSU youth compliance requirements. In the event that an in-person return to campus this summer is not possible, GATE is again prepared to transition to a LIVE synchronous format for summer and fall programs.

This past year we launched our first full two-year virtual academic year programs in ISHALL and CHAMP. Students from Michigan and across the country have been attending live synchronous classes for math and English with the opportunity to collaborate with other gifted students as far away as California.

In Fall 2022, GATE will launch our newest program, ACE (Accelerated Chinese Experience), a collaborative effort between University Outreach and Engagement and the College of Education at Michigan State University. This accelerated program aims to provide students opportunities to study the Mandarin Chinese language content and prepare for the College Board's AP Chinese Language and Culture Exam in three years, while meeting the Michigan World Language Standards and American Council on the Teaching of Foreign Languages (ACTFL) language proficiency guidelines.

In addition, we have expanded our GUPPY program to meet the growing demand of our students and families.

The advanced curriculum of all GATE programs is developed with gifted students in mind. GATE students will engage with topics and concepts that are several years advanced for their current grade level, while building on skills and concepts they may have learned in previous GATE programs. Please continue to refer to the GATE website for the most up to date information on dates, deadlines, and program information. For the 2022 application season, the summer and academic year programs application deadline is May 11, 2022, until programs fill. If academic year programs still have availability beyond that, the extended deadline will be offered for those specific openings. As always, we encourage everyone to apply early to ensure you have all materials submitted by the deadline. Summer programs have rolling admissions, so complete your application early! Please reference the Application Guideline charts (page 9 for Academic Year Programs and page 25 for Summer Programs) based on your student's current grade level to see where your student best fits.

We thank everyone who continues to weather this storm with us and look forward to a (HOPEFULLY) grand return to campus this summer!

Academic Year Information Meeting

Sunday, April 3, 2022 | 12-2 pm

R.S.V.P. at gifted.msu.edu/gateAYinfo2022

Summer Information Meeting

Sunday, April 10, 2022 | 2-4 pm

R.S.V.P. at gifted.msu.edu/GATEsummerinfo2022





Table of Contents

About Gifted and Talented Education at Michigan State University	1
About Academic Year Programs	2
About Summer Programs	3
Getting Started	4
Application Process	4
Testing Requirements	4
CogAT: Cognitive Abilities Test	6
 Academic Year Programs	 9
Academic Year Program Details	10
Academic Year Program Costs and Payment	11
Cooperative Highly Accelerated Mathematics Program (CHAMP – Mathematics)	14
Intensive Studies in Humanities, Arts, Language, and Literature (ISHALL – English)	16
Amo Linguam Latinam (ALL – Latin)	18
Accelerated Chinese Experience (ACE – Chinese)	20
Michigan’s Accelerated NihonGo for Americans (M.A.N.G.A. – Japanese)	22
 Summer Programs	 25
Summer Program Details	26
Summer Costs and Payment	26
Gifted University for Parents and Precocious Youth (GUPPY)	28
Intensive Studies for Gifted and Talented (IS4GT)	34
Math, Science, and Technology (MST@MSU)	38
Math, Science, Technology, and Leadership (MSTL)	40
Ingham Intermediate School District	42





IN MEMORIAM

Dorothy Lawshe

Dorothy passed away in May of 2019 and was the posthumous recipient of the Michigan Association for Gifted Children's inaugural Lifetime Achievement Award in October 2019. Former GATE director Jenny McCampbell accepted the award on behalf of Dorothy's family.

Dorothy won MSU's Crystal Apple Education award and also established the Cooperative Highly Accelerated Mathematics Program (CHAMP) and the Math, Science, and Technology (MST@MSU) Program, both of which are still in existence today.

Dorothy will be greatly missed, and it is our hope that past and future GATE participants and families know of her impact within the gifted community and the selflessness with which she served gifted children.

Dorothy's family has asked that donations in her memory be made to the Dorothy Lawshe Endowment in recognition of the impact Dorothy has had on the lives of Michigan children over the past several decades.

The Dorothy Lawshe Endowment for Gifted and Talented Education

The generosity of contributions to the Dorothy Lawshe Endowment fund ensures that gifted and talented students continue to enjoy excellent, enhanced, educational opportunities for years to come by funding GATE's need-based scholarships, which are granted to high-ability students who would otherwise not have access to programming.

Please donate to help support GATE and gifted students in Michigan.

Online donations can be made by visiting:

givingto.msu.edu/gift/?sid=1320







About Gifted and Talented Education

at Michigan State University

Gifted and Talented Education (GATE) is a division of University Outreach and Engagement at Michigan State University. The GATE office is dedicated to promoting differentiated educational programs for students in elementary through high school. The mission of the Gifted and Talented Education office is to provide educational experiences that allow gifted students to develop intellectually, to cultivate social relationships, and to expand their understanding of the world.



About Academic Year Programs

Space is limited in academic year programs and the application process is competitive. Programs may fill before the application deadline.

Our academic year programs challenge gifted middle and high school students in math, literature, and language. These programs are designed to replace high school curricula, allowing students to complete four years of Michigan High School Content Expectations (HSCE) and Common Core National Standards in just two years of study. (Exception: ACE and M.A.N.G.A. are three-year courses.) Courses are taught by MSU instructors. Students are expected to stay with the program for the full program cycle.

After completion, most students (excluding CHAMP) are prepared to take advanced placement (AP) courses at their high school or take dual enrollment through MSU or another institution.

Students should receive high school credit for their GATE academic year program. Please contact your student's school to confirm how they grant credit for GATE academic year programs.

Academic year programs include:

Cooperative Highly Accelerated Mathematics Program (CHAMP – Mathematics)

Current application grades for CHAMP are students in grades 6-9. CHAMP is offered in East Lansing, Southeast Michigan, and online. The CHAMP program begins with Algebra 1.

Intensive Studies in Humanities, Arts, Language, and Literature (ISHALL – English)

Current application grades for ISHALL are students in grades 6-10. ISHALL is offered in East Lansing, Southeast Michigan, and online. The ISHALL program begins with grade 9 English curriculum.

Accelerated Chinese Experience (ACE – Mandarin)

Current application grades for ACE are students in grades 6-9. ACE is a hybrid class with mostly online curriculum, as well as a few in-person meetings. ACE begins with year 1 Mandarin. PLEASE NOTE: This is a 3-year program.

Amo Linguam Latinam (ALL – Latin)

Current application grades for ALL are students in grades 6-10. ALL is a hybrid class with online and in-person meetings. ALL begins with year 1 Latin.

Michigan's Accelerated NihonGo for Americans (M.A.N.G.A. – Japanese)

Current application grades for M.A.N.G.A. are students in grades 6-9. M.A.N.G.A. is offered in Southeast Michigan. M.A.N.G.A. is a hybrid class with mostly in-person curriculum, as well as online meetings. M.A.N.G.A. begins with year 1 Japanese curriculum. PLEASE NOTE: This is a 3-year program.

About Summer Programs

Summer programs have rolling admissions and fill up quickly! Programs may fill before the application deadline. Apply early!

GATE summer programs offer students the chance to experience advanced coursework and the college campus environment alongside their high achieving peers. Programs include a residential option (when permitted) for grades 7 and above (age 12 and above), as well as a commuter option for all programs.

Summer programs include:

Gifted University for Parents and Precocious Youth (GUPPY)

GUPPY offers a variety of exploratory educational presentations and hands-on experiences in Michigan State University's laboratories and classrooms. There are several advanced topic "tracks" for students to choose from, each with their own combination of STEAM-based classes. GUPPY is available to students in grades 3-6.

Intensive Studies for Gifted and Talented (IS4GT)

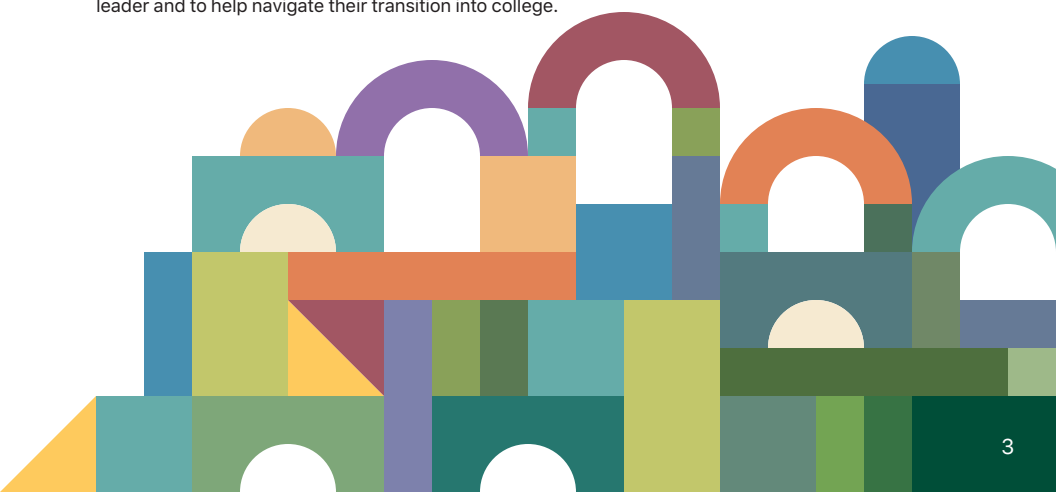
IS4GT is a one-week advanced residential or commuter program in a specific concentrated curriculum for students in grades 6-11.

Math, Science, and Technology (MST@MSU)

MST@MSU is a one-week residential or commuter program for students in grades 7-8. There are several advanced topic "tracks" for students to choose from, each with their own combination of math, science, and technology classes. MST classes and workshops are offered in a wide range of subjects, such as computer science, chemistry, engineering, and more. Each track offers two classes and one workshop.

Math, Science, Technology, and Leadership (MSTL)

MSTL is a two-week residential or commuter program for students in grades 9-10. This program offers advanced topics such as molecular biology and pathfinding. Students will choose two courses in either math, science, or technology and all participants will attend a Leadership Workshop. The Leadership workshop is designed to introduce students to concepts and skills required to be a good leader and to help navigate their transition into college.



Getting Started

All programs require these four things:

- Standardized, above grade level testing
- A teacher recommendation
- Your most recent report card
- **\$50 non-refundable application fee**

Students who are not accepted into a program must reapply and pay an additional application fee the next time they apply to a GATE program. Students may not defer their acceptance.

Application Process

Visit **gateway.gifted.msu.edu**. There you will complete (or update, if you're a returning applicant) a student profile. Once that's done, you can begin your application!

NOTE: Please visit **gifted.msu.edu/FAQs** for application deadlines

1. Complete your testing early! Testing information can be found at **gifted.msu.edu**. Each program page has an "Eligibility" page with minimum accepted tests and scores for applying. If you have an above-level test that is not listed, please e-mail **gifted@msu.edu** to see if we will consider it.
2. Upload your testing and a recent report card to your application. Clear photographs or scanned images of official test scores and report cards are accepted.
3. You will be asked for your teacher's e-mail address within your application. Once submitted, your teacher will receive a link to complete the recommendation form. External letters or recommendations are not accepted.
4. **Pay your \$50 non-refundable application fee at [gifted.msu.edu/payment](https://gateway.gifted.msu.edu/payment)**

If you're requesting financial aid, you can do so within the application. Students are limited to receiving one award per lifetime.

Complete summer applications are reviewed on a rolling basis until programs are filled. Complete academic year applications are reviewed after the first regular deadline, and families will be notified of decisions until programs are filled. If programs still have availability, complete applications will be reviewed after the extended deadline. Once your application has been completed and reviewed, you will receive a decision letter and any other materials via e-mail.

Testing Requirements

All programs require above grade-level testing such as SAT, ACT, CogAT, or NNAT. For more information, visit **gifted.msu.edu**.

The following charts show minimum test scores required to apply for GATE programs for grades 3 and up.

Only 1 qualifying score per test is required to meet minimum application requirements. For example, a CHAMP applicant needs an ACT score of at least 20 in math or a 21 composite to apply.

- Testing alone does not guarantee your student’s acceptance.
- A diagnostic test is required for CHAMP and ISHALL applications.
- A full IQ score report administered by a licensed professional is acceptable for all programs, in place of the tests listed above. For IQ testing information visit gifted.msu.edu.
- Score requirements are a minimum benchmark to apply.

Test Scores Accepted for the GUPPY Program (Grades 3–6)

Program	PSAT 8/9 Math	PSAT 8/9 Reading	NNAT	IOWA	NWEA	MSTEP	CogAT
GUPPY 3-4	410	410	90th percentile	90th percentile	95th percentile	Level 4	90th percentile
GUPPY 5-6	410	410	90th percentile	90th percentile	95th percentile	Level 4	90th percentile

Note: A full IQ score report is acceptable for all programs, in place of the tests listed above. For IQ testing information visit gifted.msu.edu. If your scores come close to meeting the stated minimums, we encourage you to apply. The application review process is holistic and will take into consideration all aspects of your application.

Minimum Test Scores Required for GATE Academic Year Programs (Grades 6 and up)

Program	ACT Math	ACT English	ACT Reading	ACT Composite	SAT Math	SAT Evidence-Based Reading and Writing	SAT Total	CogAT**
CHAMP	20	++	++	21	530	++	1000	90th percentile (Quantitative)
ISHALL	X	20	20	X	X	500	X	90th percentile (Verbal or Non-Verbal)
ACE	X	20	20	X	X	500	1020	90th percentile (Composite)
ALL	X	20	20	X	X	500	1020	90th percentile (Composite)

** CogAT scores must be in the 90th percentile in the indicated subtest. Retesting required after 3 years.
 ++No minimum score required, but student must exhibit a proficiency for reading and writing comprehension.
 ** GATE will accept ACT and SAT subject test scores.

Minimum Test Scores Required for GATE Summer Programs (Grades 6 and Up)

Program	Grades	ACT Math	ACT English	ACT Reading	ACT Composite	SAT Math	SAT Evidence-Based Reading and Writing	SAT Total	CogAT **
MST@MSU	7-8	18	18	18	19	500	500	980	90th percentile
MSTL	9-10	19	19	19	19	510	510	1000	90th percentile
Intensive Study in Review Writing	6-9	18	18	18	19	500	500	980	90th percentile
Intensive Study in Pre-Law: LitiGATE	8-11	19	19	19	19	510	510	1000	90th percentile
Intensive Study in PRE-MED ED	7-10	18	18	18	19	500	500	980	90th percentile
Intensive Study in Technophobia in Fiction and in Film	6-9	18	18	18	19	500	500	980	90th percentile

** Retesting required after 3 years.

CogAT

Cognitive Abilities Test

(Administered by MSU GATE)

To REGISTER and for DATES** go to gifted.msu.edu/testing/cogat-testing

Cost: \$59.50 per person

**More dates will be added as needed.

IQ TESTING

For application to GATE Programs, an IQ test is acceptable in place of an ACT or SAT test. The psychologists listed below provide IQ assessment, such as the WISC V test.

Pat LaPat

Clinical Psychologist

36516 Green Spring
Farmington Hills, MI 48311
Call 248-661-0195 for details

or

2190 N. Woodward
Bloomfield Hills, MI 48301
Call 248-661-0195 for details

Bright Pine

Dr. Katherine Lewitzke, PsyD, LP

Licensed Psychologist and Clinic Director
Call 248-455-6619 for details

MSU Psychological Clinic

316 Physics Rd., Rm 151
East Lansing, MI 48824
Call 517-355-9564 for details

University of Michigan

The University Center for the Child and Family

Call 734-764-9466 for details

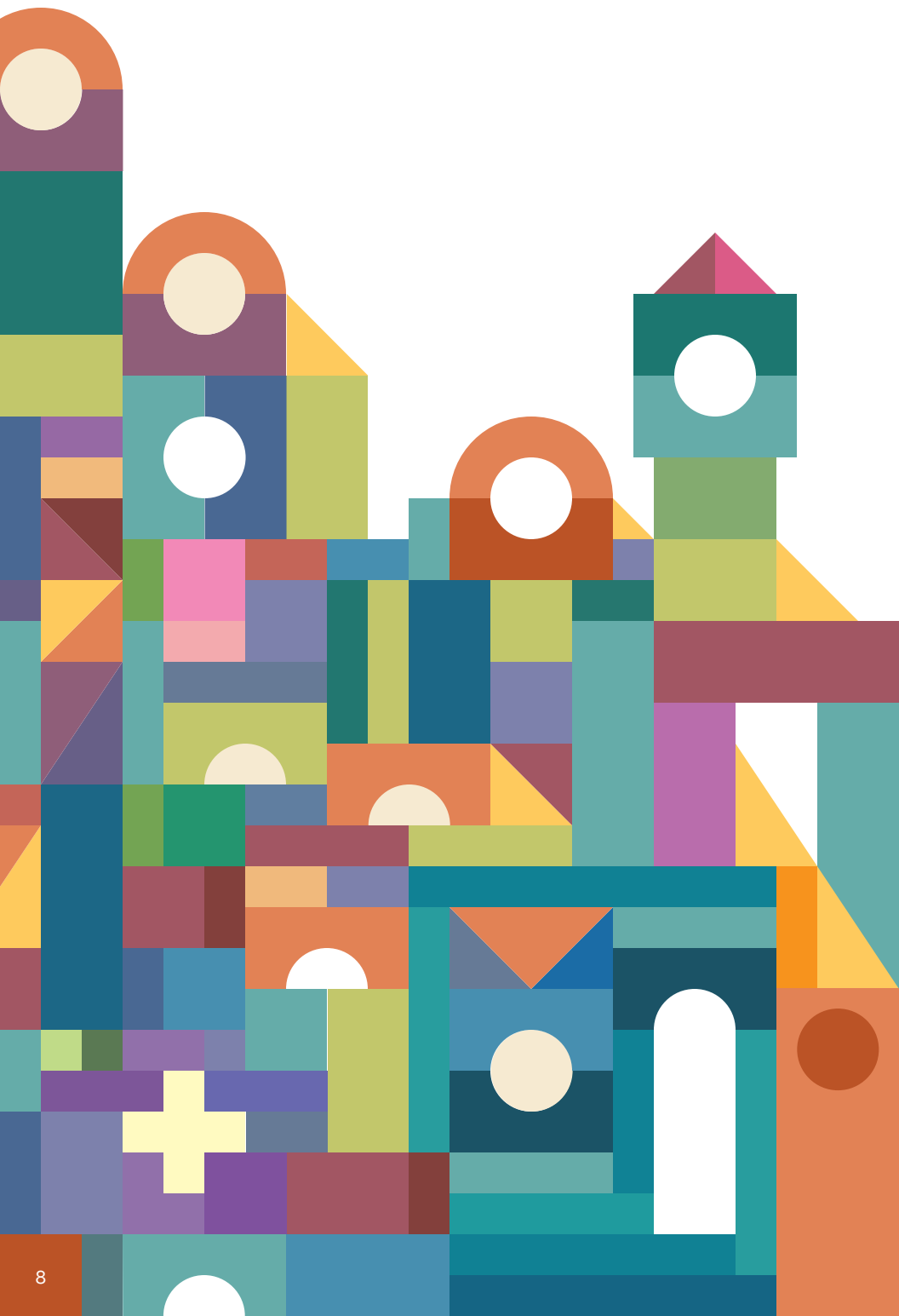
Wayne State University

Psychology Clinic

5229 Cass Avenue
Detroit, MI 48202
Call 313-577-2840 for details

The cost varies based on the services requested and rendered. Please call provider to inquire about cost.

GATE does not recommend, guarantee, or take any responsibility or liability for the list of organizations above.



Academic Year Programs

Our academic year programs challenge gifted middle and high school students in math, literature, and language. Space is limited in academic year programs and the application process is competitive. Programs may fill before the application deadlines. **Apply early!**

Academic Year Application Guideline

If you are currently in the following grades during application time...	You can apply for the following Academic Year Programs:
Grades 6-9	CHAMP or ACE
Grades 6-10	ISHALL or ALL

Note: Students begin these programs in the Fall of their 7th, 8th, 9th, or 10th grade year. For example, to begin the program in the Fall of 7th grade, students must apply in the spring of their 6th grade year. Although students may be younger than the grades stated, because of the nature of the acceleration and the high school level content, no exceptions to younger students will be granted.

For more information on responsibilities, academic integrity, lessons and class structure, and student evaluations, visit gifted.msu.edu/programs/academic-year-programs





Academic Year Program Details

What to Expect from Your GATE Program

GATE programs are designed to provide educational experiences that allow gifted students to develop intellectually, to cultivate social relationships, and to expand their understanding of the world.

Attendance, participation, and academic probation

Course attendance is mandatory.

Students are allowed 2 absences per semester (2 for Fall, 2 for Spring) and must make up any missed classwork by the next class session. Students who miss more than 2 class sessions will not receive a passing grade for the course and will be removed upon the third absence.

For the most up to date policy details, please visit
gifted.msu.edu/programs/academic-year-programs/responsibilities-of-participants

Instructional plan

Students attend one to two classes per week for a total of 2.5 hours. The schedule depends on the delivery and location of each course section.

Traditional high school curriculum is taught at an accelerated pace, requiring the student to learn to be motivated and self-guided outside of the classroom to complete substantial homework and be a mature, independent learner.

There are regularly scheduled academic year program labs outside of school hours intended to strengthen a student's understanding of program materials and concepts and to seek additional help as needed from program tutors. Study labs are optional unless the instructor has required them for your student. This requirement will be communicated to families in advance.

Students will be given an MSU account for the online course website to access academic year program coursework/homework which should be checked daily. Parents must allow students to communicate directly with the academic year program instructor.

Parent-teacher conferences are scheduled mid-semester to give parents an opportunity to communicate in person with the instructor about their student's progress. Progress

reports are made available to each student's family Fall and Spring semesters. Grade reports are distributed to families and the student's school at the end of each semester.

Costs and payment

These fees apply to:

CHAMP (all locations), **ISHALL** (all locations), **ALL**, and **ACE**

Application fees

A non-refundable \$50 application fee is required for each program.

Tuition

Tuition is \$1,590 per year

- \$795 is due within 7 days of program billing to confirm attendance.
- \$795 is due within 14 days of program billing. Please refer to acceptance letter for due dates.

Failure to pay tuition by the due dates will result in immediate withdrawal from the program. No refunds will be given.

Note: Tuition payments are non-refundable. Students accepted within 14 days of the program start will be subject to an abbreviated payment deadline.

Tuition Financial aid

Tuition assistance from the GATE office may be available to those with financial need. Fill out the Financial Aid page of the application when you apply. Parents should also contact their student's school to learn if any financial support is provided by the school. Financial aid recipients qualify to have any textbooks and field trips covered by the GATE office.

Because financial aid funding is limited, families are granted one award per lifetime. Families may apply more than once, however, extenuating circumstances may also be considered. When filling out the Financial Aid online application, please explain in the Statement of Need section in the online application. If you are awarded financial aid for an academic year program, this will also be awarded for year two of the program.

Must apply by the May 11, 2022, deadline to be considered for financial aid.

School tuition and credit granting process

Many school districts in and around GATE program areas contribute all or part of a student's tuition. Upon acceptance, you will receive a form for your student's school to complete, which includes billing information. This form must be completed and returned to the GATE office within 14 days of receipt. Families are responsible for all tuition and fees by the due dates listed in their acceptance materials. Tuition due dates are indicated in the student's decision letter. If payment is not received by posted due dates, then the student will be withdrawn from the program. All paid tuition or fees are non-refundable.

Schools are invoiced ONCE a year beginning in October. If a student's school contributes tuition costs or fees, parents will be refunded that amount AFTER the school payment is received.

GATE MSU Academic Programs are conducted as an opportunity for students to gain high school level credit, but they are not considered an honors level course. CHAMP and ISHALL classes are designed to align with Michigan HSCE requirements as well as Common Core. Parents are responsible to communicate with their child's school before applying to any academic program to address the question of issuing credit and placement of their student in their class curriculum and/or schedule. GATE does not guarantee any credit acceptance with any school or district.

NOTE: If your student leaves the program for any reason, the student is responsible for reimbursing the school for the cost of the tuition that they paid on the student's behalf.

How to pay

Payments can be made online at gifted.msu.edu/payment.

Other costs

Parents are responsible for providing transportation, as well as textbooks, classroom supplies, and a TI-84+ calculator for CHAMP students. Some programs may organize optional field trips with attendance costs to be paid by the family. For any virtual programs, students need a computer or laptop that is less than five years old and access to the internet with a recommended bandwidth of 300 kbps. Please review the technology requirements at gifted.msu.edu/programs/summer-programs/academic-year-and-summer-technology-requirements

If you have financial issues, see our policies at gifted.msu.edu/paying/financial-aid.

Cancellation policy

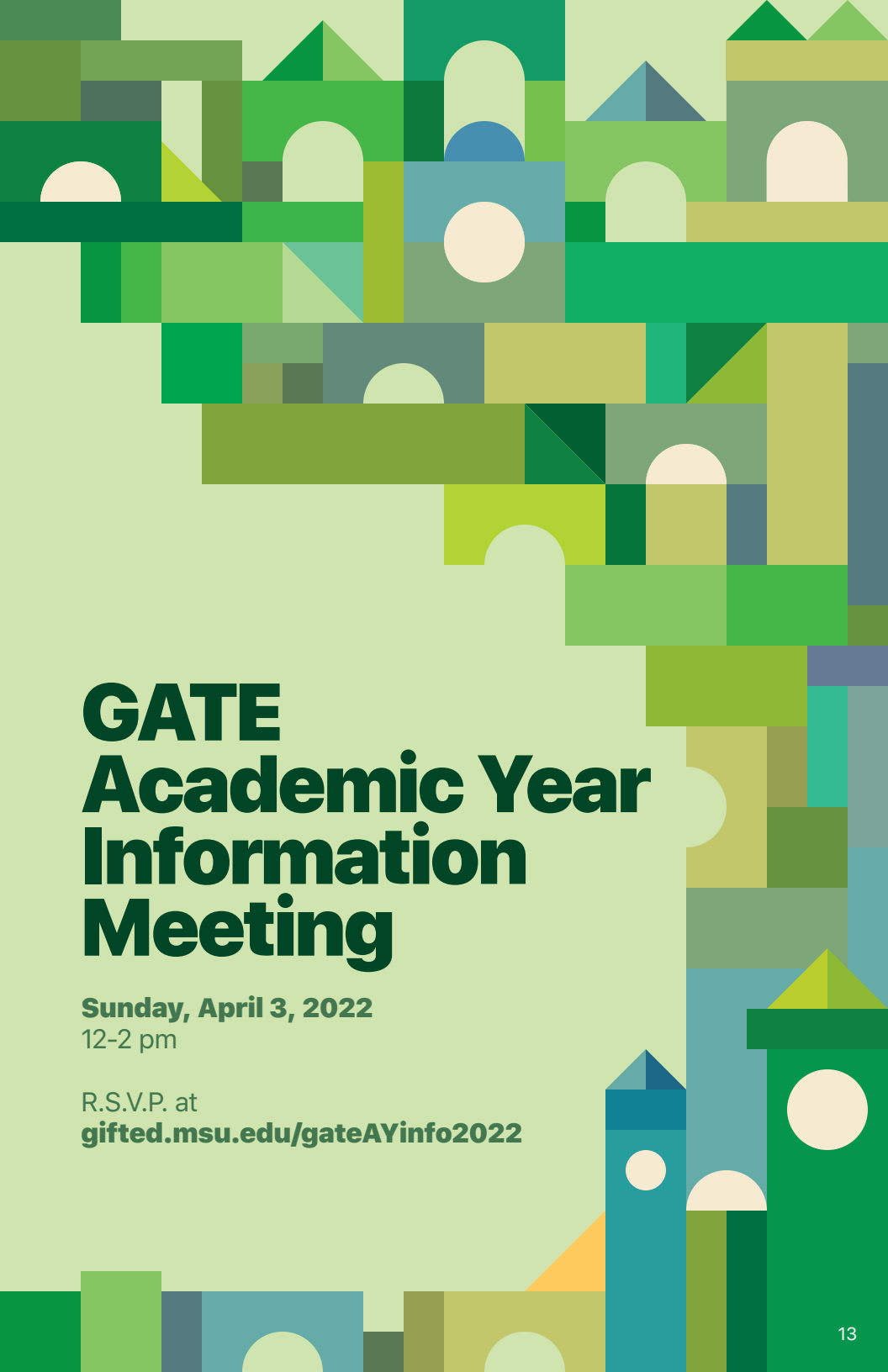
All classes are subject to a minimum enrollment and may be canceled at the discretion of the GATE office. Your application fee and any paid tuition will be refunded.

Refunds

No fees or tuition will be refunded unless the GATE office cancels the program.

Withdrawals

All requests for withdrawals must be submitted in writing to the Gifted and Talented Education office via e-mail at gifted@msu.edu. No fees or tuition will be refunded.

The background of the entire page is a complex, abstract geometric pattern. It consists of numerous overlapping squares, rectangles, and circles in a variety of colors including shades of green, blue, yellow, and grey. Some shapes have white circular cutouts, giving it a playful, architectural feel, reminiscent of a city skyline or a child's block set.

GATE Academic Year Information Meeting

Sunday, April 3, 2022
12-2 pm

R.S.V.P. at
gifted.msu.edu/gateAYinfo2022



Cooperative Highly Accelerated Mathematics Program

(CHAMP – Mathematics)

FALL 2022 – SPRING 2024

CHAMP, in partnership with the Department of Mathematics and University Outreach and Engagement at Michigan State University, provides classroom instruction for qualified, mathematically gifted students applying in grades 6-9.

Important Dates for CHAMP Program

Application deadline: May 11, 2022

Extended deadline: August 10, 2022

Information meeting: April 3, 2022 | 12-2 pm



For more information, visit:

gifted.msu.edu/champ

For information including extended course descriptions, payment options, and testing information, please visit gifted.msu.edu. Programs subject to change due to COVID restrictions | Phone: 517.432.2129 / Fax: 517.884.5927 / Email: gifted@msu.edu

**Class days and times are available on the GATE website, gifted.msu.edu.
Please refer to the GATE website for the most up to date class information.**

Students attend one to two classes per week for a total of 2.5 hours. The schedule depends on the delivery and location of each course section. Students are expected to attend regularly scheduled academic year program labs outside of class.

CHAMP is designed so that participating students will complete in two years the math content assigned in Michigan High School Content Expectations (HSCE) for all four years of high school and meet the Common Core National Standards. In their first year of CHAMP, students study Algebra 1 and Algebra 2. In the second year, CHAMP students study geometry and a standard pre-calculus course (trigonometry, analytic geometry, college algebra, and a brief introduction to calculus concepts).

Students must begin CHAMP with the study of Algebra 1. Bypassing one or more CHAMP courses is not permitted. Most students completing CHAMP will be prepared to enroll in an honors high school calculus course, an advanced placement (AP) high school calculus course, or a college calculus course.

CHAMP Schedule

Schedule:	Course:
Semester 1 (Fall, Year 1)	Algebra 1
Semester 2 (Spring, Year 1)	Algebra 2
Semester 3 (Fall, Year 2)	Geometry
Semester 4 (Spring, Year 2)	Pre-Calculus

**See the Academic Year Program details including instructional plans, responsibilities, expectations, and structure at the beginning of this section (pp. 10-12).



Intensive Studies in Humanities, Arts, Language, and Literature

(ISHALL – English)

FALL 2022 – SPRING 2024

ISHALL, in partnership with the Department of English, the Department of Writing, Rhetoric, and American Cultures, and University Outreach and Engagement at Michigan State University, provides classroom instruction for qualified, gifted language art students applying in grades 6-10.

Important Dates for ISHALL Program

Application deadline: May 11, 2022

Extended deadline: August 10, 2022

Information meeting: April 3, 2022 | 12-2 pm



For more information, visit:

gifted.msu.edu/ishall

For information including extended course descriptions, payment options, and testing information, please visit gifted.msu.edu.
Programs subject to change due to COVID restrictions | Phone: 517.432.2129 / Fax: 517.884.5927 / Email: gifted@msu.edu

**Class days and times are available on the GATE website, gifted.msu.edu.
Please refer to the GATE website for the most up to date class information.**

Students attend one to two classes per week for a total of 2.5 hours. The schedule depends on the delivery and location of each course section. Students are expected to attend regularly scheduled academic year program labs outside of class.

Because students are studying typical high school literature content, ISHALL curriculum may contain mature content that is not appropriate for all students. Parents may ask the GATE office to review a past curriculum example and then determine if their student is ready for the ISHALL curriculum.

ISHALL is designed so that participating students will complete in two years the English content assigned in Michigan High School Content Expectations (HSCE) for all four years of high school as well as meet the Common Core National Standards.

Students must begin ISHALL with the Grade 9 English curriculum. Bypassing one or more courses is not permitted. Most students completing ISHALL will be prepared to enroll in an honors high school English course, an advanced placement (AP) high school English course, or a college English or writing course.

ISHALL Schedule

Schedule:	Course:
Semester 1 (Fall, Year 1)	Grade 9 English curriculum
Semester 2 (Spring, Year 1)	Grade 10 English curriculum
Semester 3 (Fall, Year 2)	Grade 11 English curriculum
Semester 4 (Spring, Year 2)	Grade 12 English curriculum

**See the Academic Year Program details including instructional plans, responsibilities, expectations, and structure at the beginning of this section (pp. 10-12).



Accelerated Chinese Experience

(ACE – Chinese)

FALL 2022 – SPRING 2025

ACE, in partnership with the College of Education and University Outreach and Engagement at Michigan State University, provides classroom instruction for qualified world language students in grades 6-9.

Important Dates for ACE Program

Application deadline: May 11, 2022

Extended deadline: August 10, 2022

Information meeting: April 3, 2022 | 12-2 pm



For more information, visit:

gifted.msu.edu/ace

For information including extended course descriptions, payment options, and testing information, please visit gifted.msu.edu.
Programs subject to change due to COVID restrictions | Phone: 517.432.2129 / Fax: 517.884.5927 / Email: gifted@msu.edu

**Class days and times are available on the GATE website, gifted.msu.edu.
Please refer to the GATE website for the most up to date class information.**

This accelerated program aims at providing students opportunities to study the Mandarin Chinese language content and prepare for College Board's AP Chinese Language and Culture Exam in three years while meeting the Michigan World Language Standards and American Council on the Teaching of Foreign Languages (ACTFL) language proficiency guidelines.

Students must begin ACE with the Mandarin Chinese 1 curriculum. Bypassing one or more courses is not permitted. ACE is designed so that the participating students can complete in three years the Mandarin Chinese language content assigned in Michigan High School Content Expectations (HSCE) for all four years of high school.

ACE Schedule

Schedule:	Course:
Semester 1 (Fall, Year 1)	Mandarin Chinese 1
Semester 2 (Spring, Year 1)	Mandarin Chinese 2
Semester 3 (Fall, Year 2)	Mandarin Chinese 3
Semester 4 (Spring, Year 2)	Mandarin Chinese 4
Semester 5 (Fall, Year 3)	AP Mandarin Chinese Prep
Semester 6 (Spring, Year 3)	AP Mandarin Chinese Prep

**See the Academic Year Program details including instructional plans, responsibilities, expectations, and structure at the beginning of this section (pp. 10-12).



Amo Linguam Latinam

(ALL – Latin)

FALL 2022 – SPRING 2024

ALL, in partnership with the Department of Writing, Rhetoric, and American Cultures, and University Outreach and Engagement at Michigan State University, provides classroom instruction for qualified world language students in grades 6-10.

Important Dates for ALL Program

Application deadline: May 11, 2022

Extended deadline: August 10, 2022

Information meeting: April 3, 2022 | 12-2 pm



For more information, visit:

gifted.msu.edu/all

For information including extended course descriptions, payment options, and testing information, please visit gifted.msu.edu. Programs subject to change due to COVID restrictions | Phone: 517.432.2129 / Fax: 517.884.5927 / Email: gifted@msu.edu

**Class days and times are available on the GATE website, gifted.msu.edu.
Please refer to the GATE website for the most up to date class information.**

The GATE Latin Program offers a technology-enhanced format. Students will attend class via live video broadcast or in-person each week and a significant portion of the material will also be available on the course website for asynchronous learning. Twice a month, all students will be required to attend class in-person on MSU’s campus. Throughout the year, students will be able to seek additional assistance via regularly scheduled “virtual” labs.

ALL is designed so that the participating students can complete in two years the Latin language content assigned in Michigan High School Content Expectations (HSCE) for all four years of high school. Every semester of the GATE Latin program corresponds to one year of high school Latin.

Students must begin ALL with the Grade 9 Latin curriculum. Bypassing one or more courses is not permitted. Students completing ALL will be prepared to take the advanced placement (AP) Latin exam, or a college Latin course.

ALL Schedule

Schedule:	Course:
Semester 1 (Fall, Year 1)	Latin 1
Semester 2 (Spring, Year 1)	Latin 2
Semester 3 (Fall, Year 2)	Latin 3
Semester 4 (Spring, Year 2)	Latin 4

**See the Academic Year Program details including instructional plans, responsibilities, expectations, and structure at the beginning of this section (pp. 10-12).



Michigan's Accelerated NihonGo for Americans

(M.A.N.G.A. – Japanese)

M.A.N.G.A., in partnership with the Office of University Outreach and Engagement at Michigan State University, provides classroom instruction for qualified, gifted students applying in grades 6–9.

M.A.N.G.A. is on hiatus for Fall 2022. Please check back in January 2023 for the M.A.N.G.A. program starting Fall 2023–Spring 2026.



For more information, visit:

gifted.msu.edu/manga



MSU Non-Discrimination Statement

MSU's Anti-Discrimination Policy prohibits acts of discrimination and harassment against any university community member(s) by inappropriately limiting employment opportunities, access to university residential facilities, or participating in educational, athletic, social, cultural, or other university activities on the basis of age, color, gender, gender identity, disability, height, marital status, national origin, political persuasion, race, religion, sexual orientation, veteran status, or weight. Complaints under this policy may be submitted to the Office of Institutional Equity for investigation.

MICHIGAN STATE
UNIVERSITY





Summer Programs

GATE Summer programs offer students the chance to experience advanced non-credit coursework and the college campus environment alongside their high achieving peers. Summer program applications are reviewed on a rolling basis and classes fill up quickly. **Apply early!**

Summer Programs Application Guideline

If you are currently in...	...you can apply for the following Summer Programs:
Grades 3 or 4	GUPPY 3-4
Grade 5	GUPPY 5-6
Grade 6	GUPPY 5-6
Grade 7	MST@MSU, IS4GT: Intensive Studies: Pre-Med Ed Review Writing Technophobia in Fiction and in Film
Grade 8	MST@MSU, IS4GT: Intensive Studies: PRE-LAW: LitiGATE, An Intensive Study in Prosecuting and Defending A Criminal Case Review Writing Pre-Med Ed Technophobia in Fiction and in Film
Grade 9	MSTL, IS4GT: Intensive Studies: PRE-LAW: LitiGATE, An Intensive Study in Prosecuting and Defending A Criminal Case Review Writing Pre-Med Ed Technophobia in Fiction and in Film
Grade 10	MSTL, IS4GT: Intensive Studies: PRE-LAW: LitiGATE, An Intensive Study in Prosecuting and Defending A Criminal Case
Grade 11	IS4GT: Intensive Studies: PRE-LAW: LitiGATE, An Intensive Study in Prosecuting and Defending A Criminal Case



Summer Program Details

Costs and Payment

These fees apply to:

GUPPY, IS4GT, MST, and MSTL

Application fee

All programs require a \$50 non-refundable application fee.

Please note that this fee must be paid **BEFORE** any information is shared or reviewed on your application.

Tuition

Tuition amounts and deadlines are detailed in student's acceptance letters. Standard payment structure is 50% due within 7 days of billing; remaining 50% due with 14 days of billing. **Students accepted within 14 days of the program start will be subject to an abbreviated payment deadline.**

GUPPY

\$350 – per session

If you attend an AM and PM session during the same week (Monday-Friday), the cost is discounted to \$600 for the week.

IS4GT and MST@MSU

Commuter: **\$750** - includes lunches

Residential: **\$1,500**

MSTL

Commuter: **\$995** - includes lunches

Residential: **\$1,950**

Tuition Financial aid

Tuition assistance from the GATE office may be available to those with financial need. Fill out the Financial Aid page of the application when you apply.

Because financial aid funding is limited, families are granted one award per lifetime. Families may apply more than once, however, extenuating circumstances may also be considered. When filling out the Financial Aid online application, please explain in the Statement of Need section in the online application. If you are awarded financial aid for an academic year program, this will also be awarded for year two of the program.

Must apply by the May 11, 2022, deadline to be considered for financial aid.

How to pay

Payments can be made online at [**gifted.msu.edu/payment**](https://gifted.msu.edu/payment).

Cancellation policy

All programs, or classes within a program, may be subject to a minimum enrollment of students and may be canceled at the discretion of the GATE office. Additionally, the residential portion of the programs may be canceled if there are not enough residential students enrolled. Any applicable fees and/or tuition will be refunded.

Refunds and drops

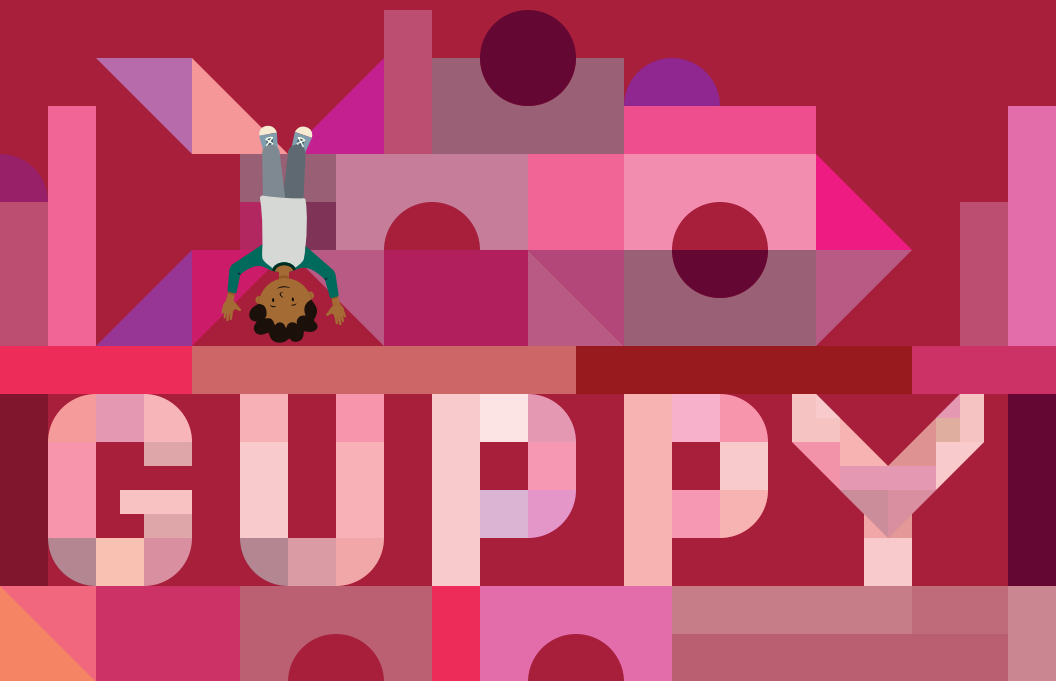
The application fee of \$50 is non-refundable.

All requests for withdrawals for Summer programs must be submitted in writing to the Gifted and Talented Education office via e-mail at [**gifted@msu.edu**](mailto:gifted@msu.edu). No fees or tuition will be refunded.

A student may only leave the program in case of emergency. In such a case, the student should take all personal belongings with them as they will be considered withdrawn from the program. No refunds will be given.

FAQs

For Summer program FAQs, visit [**gifted.msu.edu/about/faqs**](https://gifted.msu.edu/about/faqs)



Gifted University for Parents and Precocious Youth (GUPPY)

GUPPY is a weekend program offering students in grades 3-6 a variety of accelerated exploratory educational presentations and hands-on experiences in Michigan State University's laboratories and classrooms.

Important Dates for GUPPY Program

GUPPY 3-4 and 5-6

- **June 20-24, 2022**
(Week-long – AM or PM)
- June 24-26, 2022
- **June 27-July 1, 2022**
(Week-long – AM or PM)
- July 8-10, 2022
- **July 11-15, 2022**
(Week-long – AM or PM)
- July 15-17, 2022
- **July 18-22, 2022**
(Week-long – AM or PM)
- July 22-24, 2022

Parent University

TBD
Check
gifted.msu.edu/guppy
for the most up-to-date
information



Application deadline: May 11, 2022

For more information, visit:

gifted.msu.edu/guppy

GUPPY is designed for young gifted and talented students to attend classes taught by MSU faculty and subject experts at Michigan State University for the weekend or a half-day week. This GATE program will offer young, gifted students a variety of accelerated exploratory educational presentations and hands-on experiences in MSU's laboratories and classrooms.

Commuting

Local families commute daily by dropping off and picking up their student each day from campus.

GUPPY's Parent University

GUPPY's Parent University provides presentations about gifted children by experts. Various topics related to gifted education and raising a gifted child will be discussed. Past topics include: Gifted 101, Road map to Advocacy, IQ Testing, and Spatial Learners. All GUPPY parents are welcome to attend the Parent U session. Please check gifted.msu.edu/guppy for the most up-to-date information on Parent University schedule details.

GATE Summer Information Meeting

Sunday, April 10, 2022
2-4 pm

R.S.V.P. at
gifted.msu.edu/GATEsummerinfo2022

GUPPY 3-4 Track Options

Students in Grades 3-4 will take the classes in one of the tracks below.

Space is limited, and each track will be filled on a first-come first-served basis.

For full descriptions, see gifted.msu.edu/guppy

Session 1: June 20-24, 2022 (GUPPY 3-4)

Track	Class 1 8:45 – 9:45 am	Class 2 10:00 – 11:00 am	Class 3 11:15 am – 12:15 pm
A-1	The Art of the Fairy Tale: Aesops Fables	Theatre Arts	Math Olympiad Jr.
B-1	Experiencing Chinese Culture Through Language	3-D Math	The Art of Wizards Warriors and Dragons
Track	Class 1 1:30 – 2:30 pm	Class 2 2:45 – 3:45 pm	Class 3 4:00 – 5:00 pm
A-2	Futurama and the City of Tomorrow	Kakuro Kryptonite	Mixtures, Measurements, and Mayhem

Session 2: June 24-26, 2022 (GUPPY 3-4)

Track	Class 1 8:45 – 10:25 am	Class 2 10:40 am – 12:20 pm	Class 3 1:50 – 3:30 pm
C-3	Forensics Entomology: Applying Arthropod Science to a Court of Law	Storytelling in Scratch	3-D Art and Mixed Media
D-3	Would you Like a Piece of Pi?	Science Olympiad Exploration Jr.	MineCraft

Session 3: June 27-July 1, 2022 (GUPPY 3-4)

Track	Class 1 8:45 – 9:45 am	Class 2 10:00 – 11:00 am	Class 3 11:15 am – 12:15 pm
E-1	Science-Fiction Art	Mathematical Brainteasers	Public Service and Safety Careers
Track	Class 1 1:30 – 2:30 pm	Class 2 2:45 – 3:45 pm	Class 3 4:00 – 5:00 pm
E-2	Tinker CAD	Japanese Art	Anatomy and Physiology: An exploration of the human body

Session 4: July 8-10, 2022 (GUPPY 3-4)

Track	Class 1 8:45 – 10:25 am	Class 2 10:40 am – 12:20 pm	Class 3 1:50 – 3:30 pm
F-3	Mental Math Calculations	Ludicrous Logic Grids	Night at the Art Museum

Session 5: July 11-15, 2022 (GUPPY 3-4)

Track	Class 1 8:45 – 9:45 am	Class 2 10:00 – 11:00 am	Class 3 11:15 am – 12:15 pm
H-1	The Art of Design and Modeling	Zootopia	Media Savvy
Track	Class 1 1:30 – 2:30 pm	Class 2 2:45 – 3:45 pm	Class 3 4:00 – 5:00 pm
H-2	Math from “A to Z”	The Clash of Art and Mythology	Anatomy and Physiology: An exploration of the human body

Session 6: July 15-17, 2022 (GUPPY 3-4)

Track	Class 1 8:45 – 10:25 am	Class 2 10:40 am – 12:20 pm	Class 3 1:50 – 3:30 pm
I-3	Moneyball: Sports Statistics	Water, Water Everywhere: Understanding Water Quality!	Hacking with Glitch

Session 7: July 18-22, 2022 (GUPPY 3-4)

Track	Class 1 8:45 – 9:45 am	Class 2 10:00 – 11:00 am	Class 3 11:15 am – 12:15 pm
J-1	Outdoor Wilderness Survival	Learning Math from Zero to Infinity	A Tour of Western Culture through Art
Track	Class 1 1:30 – 2:30 pm	Class 2 2:45 – 3:45 pm	Class 3 4:00 – 5:00 pm
J-2	Comic Book Creations	Entrepreneurship	Crazy-Making Calcudoku

Session 8: July 22-24, 2022 (GUPPY 3-4)

Track	Class 1 8:45 – 10:25 am	Class 2 10:40 am – 12:20 pm	Class 3 1:50 – 3:30 pm
K-3	Fashion Art Icons	Spanish is my Superpower!	Looking for Pythagoras

GUPPY 5-6 Track Options

Students in Grades 5-6 will take the classes in one of the tracks below.

Space is limited, and each track will be filled on a first-come first-served basis.

**additional fee applies

For full descriptions, see gifted.msu.edu/guppy

Session 1: June 20-24, 2022 (GUPPY 5-6)

Track	Class 1 8:45 – 9:45 am	Class 2 10:00 – 11:00 am	Class 3 11:15 am – 12:15 pm
L-1	Estimation Problems and Orders of Magnitude	The Art and History of Printmaking	Mandarin Chinese Language ACE Jr.
M-1	Learning Math from Zero to Infinity	Nuclear Astrophysics: Massive stars, tiny nuclei, and you	Probability: What is my next move?
Track	Class 1 1:30 – 2:30 pm	Class 2 2:45 – 3:45 pm	Class 3 4:00 – 5:00 pm
L-2	Media Savvy	Futurama and the City of Tomorrow	Real World Algebra: Algebra+Problems=Real World Connections

Session 2: June 24-26, 2022 (GUPPY 5-6)

Track	Class 1 8:45 – 10:25 am	Class 2 10:40 am – 12:20 pm	Class 3 1:50 – 3:30 pm
N-3	Geocaching **	What Makes a Bird a Bird?	Sneaker Art **
O-3	Tinker CAD	Fishful Thinking: A class that will be “catchy!”***	Science Olympiad Exploration

Session 3: June 27-July 1, 2022 (GUPPY 5-6)

Track	Class 1 8:45 – 9:45 am	Class 2 10:00 – 11:00 am	Class 3 11:15 am – 12:15 pm
P-1	Pre-Med Jr.	Pre-Med Jr.	Pre-Med Jr.
Track	Class 1 1:30 – 2:30 pm	Class 2 2:45 – 3:45 pm	Class 3 4:00 – 5:00 pm
P-2	Optics Science	HTML for Web Design	Video Game Development

Session 4: July 8-10, 2022 (GUPPY 5-6)

Track	Class 1 8:45 – 10:25 am	Class 2 10:40 am – 12:20 pm	Class 3 1:50 – 3:30 pm
Q-3	Meteorology: The Wild World of Weather	Forensic Entomology: Applying Arthropod Science to a Court of Law	M.A.N.G.A. Jr. Japanese Language

Session 5: July 11-15, 2022 (GUPPY 5-6)

Track	Class 1 8:45 – 9:45 am	Class 2 10:00 – 11:00 am	Class 3 11:15 am – 12:15 pm
R-1	Bring Your Photos to Life: Publish Your Own Photobook**	Spirited Away: Main Character Energy, Be Your Own Protagonist!	Edible Art: Creative Cookies!!**
Track	Class 1 1:30 – 2:30 pm	Class 2 2:45 – 3:45 pm	Class 3 4:00 – 5:00 pm
R-2	STEM Career Exploration	Mathematicians and the Crazy Things They've Discovered!	Days in the Life of a Statistician

Session 6: July 15-17, 2022 (GUPPY 5-6)

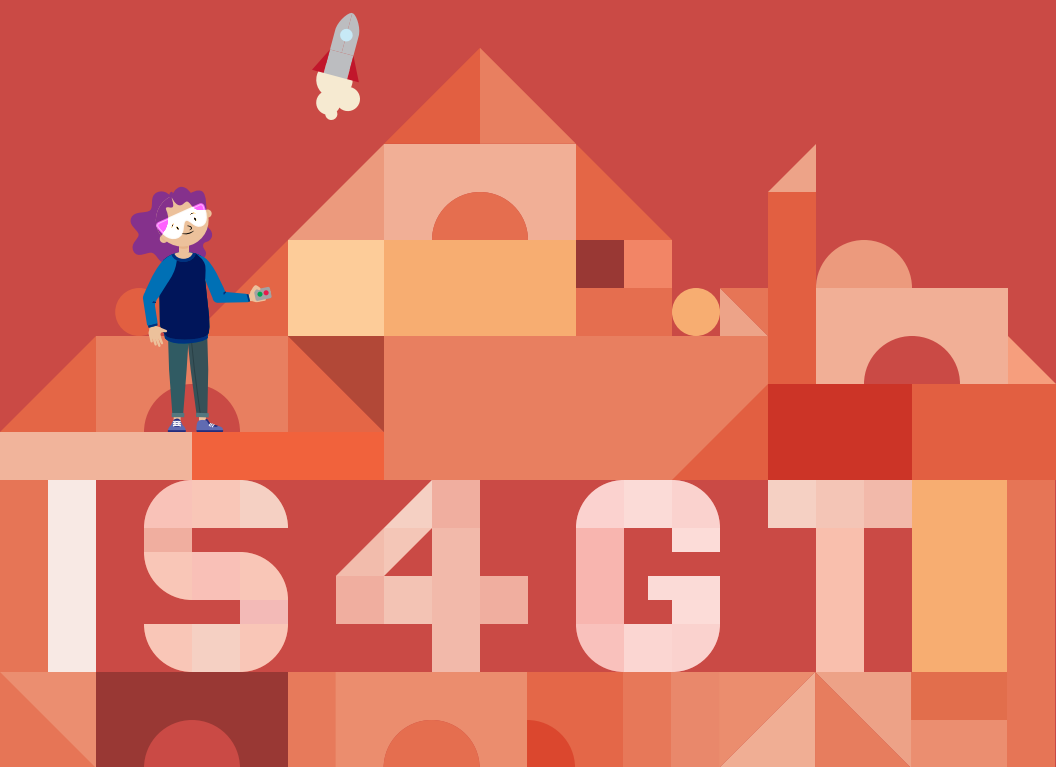
Track	Class 1 8:45 – 10:25 am	Class 2 10:40 am – 12:20 pm	Class 3 1:50 – 3:30 pm
S-3	MineCraft	Math Olympiad Jr.	Investigating Animal Behavior in family Armadillidae

Session 7: July 18-22, 2022 (GUPPY 5-6)

Track	Class 1 8:45 – 9:45 am	Class 2 10:00 – 11:00 am	Class 3 11:15 am – 12:15 pm
T-1	Coordinate Graphing: Create Pictures Using Mathematics	Survivor! Survivor!	Edible Art: Creative Cookies!!**
Track	Class 1 1:30 – 2:30 pm	Class 2 2:45 – 3:45 pm	Class 3 4:00 – 5:00 pm
T-2	Conservation Biology	Podcasting	The Art of Da Vinci and the Mona Lisa

Session 8: July 22-24, 2022 (GUPPY 5-6)

Track	Class 1 8:45 – 10:25 am	Class 2 10:40 am – 12:20 pm	Class 3 1:50 – 3:30 pm
U-3	Astronomy is Out of this World!	Fishful Thinking: A class that will be "catchy!"**	Becoming Bilingual: Building your Spanish Language Skills



Intensive Studies for Gifted and Talented (IS4GT)

A one-week advanced program in a specific concentrated curriculum, IS4GT is an option for gifted 6th–11th grade students. Classes focus on one main topic for the week.

Important Dates for IS4GT Program

IS4GT Program Dates

June 20–24, 2022

- Review Writing

June 27–July 1, 2022

- PRE-MED ED
- Technophobia in Fiction and in Film

July 11–15, 2022

- PRE-LAW: LitiGATE, An Intensive Study in Prosecuting and Defending a Criminal Case



Application deadline: May 11, 2022

For more information, including course descriptions, visit:

gifted.msu.edu/is4gt

For information including extended course descriptions, payment options, and testing information, please visit gifted.msu.edu. Phone: 517.432.2129 / Fax: 517.884.5927 / Email: gifted@msu.edu

IS4GT Course Offerings for **June 20-24, 2022**

Please note: Listed grades are the grades that students are in when they are applying.

For more comprehensive class details, see gifted.msu.edu/is4gt

Review Writing

If You Love What They Do, Write a Review

Grades 6-9

Almost everywhere you look there are reviews...of products online, of restaurants, of video games, of movies, and of television series. In this course, the students will examine the big questions, "what makes a good review?" and "what are the elements in a review?" In this process, students will read typical and atypical reviews, and, yes, they will write a review of their own as a final sharable "real-world" product.

IS4GT Course Offerings for **June 27-July 1, 2022**

Please note: Listed grades are the grades that students are in when they are applying.

For more comprehensive class details, see gifted.msu.edu/is4gt

PRE-MED ED

Grades 7-10

This program is intended for students interested in the health care field. Students will:

- discover medical specialties through hands-on demonstrations and activities, such as intubation, physical therapy, respiratory therapy, and dissections.
- learn whole body anatomy, physiology, and integrated body systems to see how all the different systems in the body work together.
- explore the life of CPR and emergency medical response professionals.
- learn about pharmacology and how drugs interact with the body and living systems.
- learn about the different approaches of medicine: allopathic (MD) and osteopathic (DO).
- have the opportunity to explore subspecialties within the field of medicine.

Technophobia in Fiction and in Film

Grades 6-9

According to Wikipedia, technophobia, also known as "*technofear*," is the fear or dislike of advanced technology or complex devices, especially computers. How much do people actually fear or embrace technology? With schools of thought regarding "polytechnicism" as the trend for development and progression, this course will look at a study of fiction and of film that run counter to this movement. The "technophobic" schools of thought will move, among others, from brief explorations of works from Jack London to Stephen King (as Richard Bachman) and from Orson Wells to Michael Bay. Students will research technophobia and create a fiction piece with a technophobic character. Also, they will role play with characters in imagined settings.

IS4GT Course Offerings for **July 11-15, 2022**

Please Note: Listed grades are the grades that students are in when they are applying.

For more comprehensive class details, see gifted.msu.edu/is4gt

PRE-LAW: LitiGATE

An Intensive Study in Prosecuting and Defending a Criminal Case Grades 8-11

In partnership with Western Michigan University Cooley Law School, students will learn about specializing in legal education as part of the process of attending law school. Students will attend classes at the Western Michigan University Cooley Law School and learn from practicing attorneys.

- Students will learn to read a case file, a criminal statute, and a criminal complaint.
- Students will create a case theme, observe skills necessary for opening statements and closing arguments, effective techniques for direct and cross-examination, and proper methods for introducing items into evidence.
- After observing the tutorials, students will practice what they have learned by performing collaborative and interactive exercises designed to prepare for participating in a mock trial. Instructors will provide feedback and constructive critiques to help prepare the students for their final mock trial.



Pioneer



Innovate



Engage

MICHIGAN STATE
UNIVERSITY

Honors College

honorscollege.msu.edu



Math, Science, and Technology (MST@MSU)

MST@MSU is a one-week summer commuter or residential program for students who are currently in grades 7 or 8 during the 2021-2022 school year. To sign up for the residential option, students must be a minimum age of 12 years old.

NOTE: MST/MSTL class and workshop choices are subject to change or cancellation at the discretion of the GATE office. Such changes **DO NOT** warrant refunds or withdrawals.

Important Dates for MST Program

MST Program Dates June 20–24, 2022, July 11–15, 2022, and July 18–22, 2022

Session 1:
June 20–24, 2022

Orientation – June 19, 2022
For parents and students

Classes held Monday – Friday
9:00 am – 5:00 pm
(lunch included for all students)

**Check-out and
Closing Ceremony**
Friday, June 24, 2022
For all students and parents

Session 2:
July 11–15, 2022

Orientation – July 10, 2022
For parents and students

Classes held Monday – Friday
9:00 am – 5:00 pm
(lunch included for all students)

**Check-out and
Closing Ceremony**
Friday, July 15, 2022
For all students and parents

Session 3:
July 18–22, 2022

Orientation – July 17, 2022
For parents and students

Classes held Monday – Friday
9:00 am – 5:00 pm
(lunch included for all students)

**Check-out and
Closing Ceremony**
Friday, July 22, 2022
For all students and parents



Application deadline: May 11, 2022

For more information, including course descriptions, visit:

gifted.msu.edu/mst

For information including extended course descriptions, payment options, and testing information, please visit gifted.msu.edu. Phone: 517.432.2129 / Fax: 517.884.5927 / Email: gifted@msu.edu

The MST program is held at the MSU campus and offers a variety of topics within mathematics, science, and technology, focusing on real-world applications in these areas. The goal is to match the intellectual abilities of talented students with rigorous and challenging course work, which provides enrichment but does not duplicate or accelerate course work that is part of the regular middle school curriculum.

Students will select one course track for the week, consisting of two academic classes and one workshop. Students may choose to attend any/all weeks of MST.

See individual class descriptions on gifted.msu.edu/mst.

MST Track Options

**additional fee applies

June 20-24, 2022

Track	Class 1 9:00 – 11:00 am	Class 2 12:30 – 2:30 pm	Class 3 3:00 – 5:00 pm
1	What Sustains Us: Exploring the Wide World of Agriculture	Advanced Mathematics and Its Applications	The Chemistry of Cooking: Exploring the reactions between food and science

July 11-15, 2022

Track	Class 1 9:00 – 11:00 am	Class 2 12:30 – 2:30 pm	Class 3 3:00 – 5:00 pm
2	Mechatronics	The gigantic and miniscule world of Nuclear Astrophysics	Hungry for Raspberry Pi?*

July 18-22, 2022

Track	Class 1 9:00 – 11:00 am	Class 2 12:30 – 2:30 pm	Class 3 3:00 – 5:00 pm
3	Engineering 101	Kinesiology: Understanding Human Motor Learning and Performance	Composing Electronic Music



Math, Science, Technology, and Leadership (MSTL)

The Mathematics, Science, Technology, and Leadership (MSTL) program at Michigan State University is a two-week summer commuter or residential program for academically talented students who are currently in grades 9 or 10 during the 2021-2022 school year.

NOTE: MST/MSTL class and workshop choices are subject to change or cancellation at the discretion of the GATE office. Such changes **DO NOT** warrant refunds or withdrawals.

Important Dates for MSTL Program

MSTL Program Dates July 11-22, 2022

July 10, 2022

Orientation

For parents and students

July 11-15, 2022 and

July 18-22, 2022

Classes held Monday – Friday

9:00 am – 5:00 pm

(lunch included for all students)

July 22, 2022

**Check-out and
Closing Ceremony**

Friday, July 22, 2022

For all students and parents)



Application deadline: May 11, 2022

For more information, including course descriptions, visit:

gifted.msu.edu/mstl

The MSTL program offers advanced curriculum designed to stimulate students to learn about new developments in mathematics, science, and technology, and to explore related career fields. Students will attend one course track for the two weeks, consisting of two academic classes and one leadership workshop.

For more comprehensive class details, go to gifted.msu.edu/programs/summer-programs/mstl/class-options.

MSTL Classes

Molecular Biology: Bacterial Behavior and Communication

- By studying how chemotaxis works, students will discover the simple molecular mechanisms that form the building blocks of sophisticated signaling networks.
- Using computer simulations, students will explore how signaling networks control bacterial behaviors in complex environments.

Fascinating Physics

- Students will learn how to apply mathematics and use computers to measure Earth's gravitational acceleration, to explore circuits with LEDs, and to investigate resonant frequencies of a vibrating string.
- Students will discover how to apply algebra, trigonometry, and physics to gain a better understanding of rotational motion and interference patterns produced by laser light.
- Students will design and conduct physics experiments and present the results of those experiments.
- Students will learn how to effectively communicate physics concepts to others.

MSTL Workshop

Leadership

As a high school student, the road to navigating the way from high school to college is difficult. This path is filled with uncertainties, questions, and many unknowns. This workshop will provide students access to several different aspects of this transition, which may include sharpening college level writing skills and hearing from experts about the different challenges and experiences that come with this exciting new chapter. Students will receive a college admission card game to take home and play.



Ingham Intermediate School District

Ingham Intermediate School District is a regional educational service agency that offers programs and services to 12 public school districts, 9 public school academies, over 44,000 students, and reaches into seven counties. Our continuum of programs and services includes summer camps to challenge young minds.

Gifted and Talented programs are available through Ingham ISD and through partnerships with Michigan State University and Lansing Community College. These programs provide challenging educational enrichment opportunities for K-12 students.

For more information, visit:

inghamisd.org/thelatest/events/giftedandtalentedprograms

For information including extended course descriptions, payment options, and testing information, please visit gifted.msu.edu.
Programs subject to change due to COVID restrictions | Phone: 517.432.2129 / Fax: 517.884.5927 / Email: gifted@msu.edu

Ingham ISD Summer 2022 Programs

Wilson Talent Center Summer Camps

The Wilson Talent Center will once again be offering Summer Career Camps for students entering grades 5-7 in the fall. These camps will provide students the opportunity to participate in hands-on activities in career fields such as digital arts, culinary arts, automotive and sports medicine, just to name a few.

Kids' College

The Gifted and Talented Office of Ingham Intermediate School District is pleased to announce the 35th year of Kids' College for talented students. This collaborative venture improves and expands educational offerings for students who have outstanding abilities and/or potential talent in the content areas of science, technology, engineering and math.

Kids' College is an academic program and not a camp experience. However, the learning experience will be exciting, enjoyable and challenging. This program is sponsored by Ingham Intermediate School District and partially funded by a grant from The W.B. and Candace Thoman Foundation.

Math Scholars' University

Math Scholars' University is a two-week program designed to serve students who are identified as having high abilities or interest in mathematics. This program challenges students to develop a better understanding of mathematics using problem-solving applications, mathematical reasoning and collaboration. Math Scholars' University is for students in grades 6 or 7.

The topics of Math Scholars' University are intended to supplement, complement and extend mathematics taught in the classroom during the school year. The choice of topics is based on current research in mathematics and knowledge about how children learn. The instruction focuses on cooperative learning and builds on children's prior mathematical knowledge.

This program is sponsored by Ingham Intermediate School District and partially funded by a grant from The W.B. and Candace Thoman Foundation.

MICHIGAN STATE UNIVERSITY

SCIENCE FESTIVAL

10 YEARS | **APRIL 1-30, 2022**

ENVISIONING THE **FUTURE**

- In-person events (on MSU campus and statewide)
- Live virtual events and on-demand programs
- All events and programs are **FREE!**



sciencefestival.msu.edu



MICHIGAN STATE UNIVERSITY

spartan youth programs

**Camps, Courses, Places to Visit,
Programs, and Other Activities
for Kids of All Ages**

(Pre-K through 12th Graders)

What is SYP?

An online catalog of **exciting opportunities for pre-K through 12th graders** to improve their knowledge and skills in specific subject areas. Pre-college programs are an excellent way for students to explore majors or careers while being introduced to the college environment.

With **over 200 listings** covering topics in agriculture, art, business, computers, engineering, math, music, science, sports, and writing, MSU is sure to have a **program for every student!**

You can search the SYP website for:

- summer and school year programs
- opportunities to earn college credit
- residential experiences on the MSU campus
- financial assistance
- study abroad possibilities

For more information visit

spartanyouth.msu.edu

MICHIGAN STATE
U N I V E R S I T Y

Gifted and Talented Education
University Outreach and Engagement

Kellogg Center
219 S. Harrison Rd., Rm 8
East Lansing, MI 48824

For more information on any of our programs, please visit

GIFTED.MSU.EDU