



GATE

Gifted and Talented Education
MICHIGAN STATE UNIVERSITY

2023-2024
PROGRAM GUIDE



快捷中文

Apply online at

gifted.msu.edu

Dear Families and Students,

Here's to 2023! As we continue to navigate in the wake of the pandemic, we are working diligently to continue to plan and expand future programming. We have enjoyed participating with GATE students virtually in a live Zoom synchronous format since March 2020 and have continuously worked to improve those offerings.

We are once again optimistic about the return to campus for the summer of 2023 but must continue to follow MSU youth compliance requirements. In the event that an in-person return to campus this summer is not possible, GATE is again prepared to transition to a LIVE synchronous format for the summer and fall programs.

In 2021, we launched our first full two-year virtual academic year programs in ISHALL and CHAMP. Students from Michigan and across the country have been attending live synchronous classes for math and English with the opportunity to collaborate with other gifted students as far away as California.

In Fall 2022, GATE launched our newest program, ACE (Accelerated Chinese Experience), a collaborative effort between University Outreach and Engagement and the College of Education at Michigan State University. This accelerated program will provide students opportunities to study the Mandarin Chinese language content and prepare for the College Board's AP Chinese Language and Culture Exam in three years, while meeting the Michigan World Language Standards and American Council on the Teaching of Foreign Languages (ACTFL) language proficiency guidelines.

In addition, we have expanded our GUPPY program to meet the growing demand of our students and families.

The advanced curriculum of all GATE programs is developed with gifted students in mind. GATE students will engage with topics and concepts that are several years advanced for their current grade level, while building on skills and concepts they may have learned in previous GATE programs.

Please continue to refer to the GATE website for the most up to date information on dates, deadlines, and program information. For the 2023 application season, the summer and academic year programs application deadline is May 19, 2023, until programs fill. If academic year programs still have availability beyond that, the extended deadline will be offered for those specific openings.

As always, we encourage everyone to apply early to ensure you have all materials submitted by the deadline. Summer programs have rolling admissions, so complete your application early! Please reference the Application Guideline charts (page 9 for Academic Year Programs and page 25 for Summer Programs) based on your student's current grade level to see where your student best fits.

We look forward to returning to residential programs this summer the week of July 10 for our MST, MSTL, and IS4GT students!

GATE Summer and Academic Year Programs **Virtual Information Meeting**

Sunday, April 16, 2023 | 1-2:30 pm

R.S.V.P. at gifted.msu.edu/rsvpGATEInfoMeeting2023



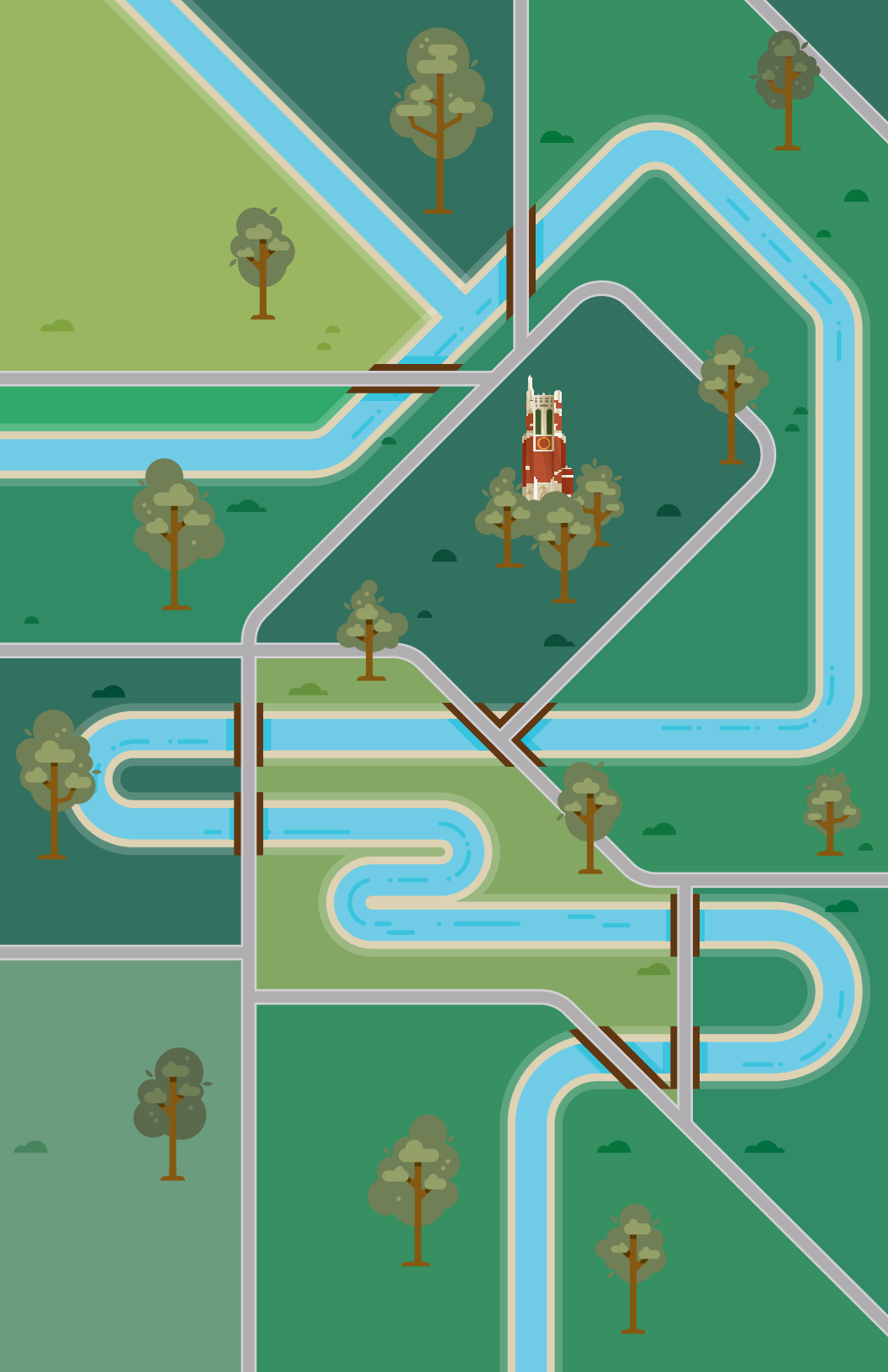


Table of Contents

About Gifted and Talented Education at Michigan State University	1
About Academic Year Programs	2
About Summer Programs	3
Getting Started	4
Application Process	4
Testing Requirements	5
CogAT: Cognitive Abilities Test	6
Academic Year Programs	9
Academic Year Program Details	10
Academic Year Program Costs and Payment	11
Cooperative Highly Accelerated Mathematics Program (CHAMP – Mathematics)	14
Intensive Studies in Humanities, Arts, Language, and Literature (ISHALL – English)	16
Michigan’s Accelerated NihonGo for Americans (M.A.N.G.A. – Japanese)	18
Amo Linguam Latinam (ALL – Latin)	20
Accelerated Chinese Experience (ACE – Chinese)	22
Summer Programs	25
Summer Program Details	26
Summer Costs and Payment	26
Gifted University for Parents and Precocious Youth (GUPPY)	28
Intensive Studies for Gifted and Talented (IS4GT)	32
Math, Science, and Technology (MST@MSU)	34
Math, Science, Technology, and Leadership (MSTL)	36





IN MEMORIAM

Dorothy Lawshe

Dorothy passed away in May of 2019 and was the posthumous recipient of the Michigan Association for Gifted Children's inaugural Lifetime Achievement Award in October 2019. Former GATE director Jenny McCampbell accepted the award on behalf of Dorothy's family.

Dorothy won MSU's Crystal Apple Education award and also established the Cooperative Highly Accelerated Mathematics Program (CHAMP) and the Math, Science, and Technology (MST@MSU) Program, both of which are still in existence today.

Dorothy will be greatly missed, and it is our hope that past and future GATE participants and families know of her impact within the gifted community and the selflessness with which she served gifted children.

Dorothy's family has asked that donations in her memory be made to the Dorothy Lawshe Endowment in recognition of the impact Dorothy has had on the lives of Michigan children over the past several decades.

The Dorothy Lawshe Endowment for Gifted and Talented Education

The generosity of contributions to the Dorothy Lawshe Endowment fund ensures that gifted and talented students continue to enjoy excellent, enhanced, educational opportunities for years to come by funding GATE's need-based scholarships, which are granted to high-ability students who would otherwise not have access to programming.

Please donate to help support GATE and gifted students in Michigan.

Online donations can be made by visiting:

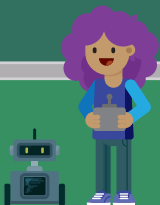
givingto.msu.edu/gift/?sid=1320





About Gifted and Talented Education at Michigan State University

Gifted and Talented Education (GATE) is a division of University Outreach and Engagement at Michigan State University. The GATE office is dedicated to promoting differentiated educational programs for students in elementary through high school. The mission of the Gifted and Talented Education office is to provide educational experiences that allow gifted students to develop intellectually, to cultivate social relationships, and to expand their understanding of the world.



About Academic Year Programs

Space is limited in academic year programs and the application process is competitive. Programs may fill before the application deadline.

Our academic year programs challenge gifted middle and high school students in math, literature, and language. These programs are designed to replace high school curricula, allowing students to complete four years of Michigan High School Content Expectations (HSCE) and Common Core National Standards in just two years of study. (Exception: ACE and M.A.N.G.A. are three-year courses.) Courses are taught by MSU instructors. Students are expected to stay with the program for the full program cycle.

After completion, most students (excluding CHAMP) are prepared to take advanced placement (AP) courses at their high school or take dual enrollment through MSU or another institution.

Students should receive high school credit for their GATE academic year program. Please contact your student's school to confirm how they grant credit for GATE academic year programs.

Academic year programs include:

Cooperative Highly Accelerated Mathematics Program (CHAMP – Mathematics)

Current application grades for CHAMP are students in grades 6-9. CHAMP is offered in East Lansing and online. The CHAMP program begins with Algebra 1.

Intensive Studies in Humanities, Arts, Language, and Literature (ISHALL – English)

Current application grades for ISHALL are students in grades 6-10. ISHALL is offered in East Lansing and online. The ISHALL program begins with grade 9 English curriculum.

Michigan's Accelerated NihonGo for Americans (M.A.N.G.A. – Japanese)

Current application grades for M.A.N.G.A. are students in grades 6-9. M.A.N.G.A. is a hybrid class with live, synchronous online curriculum, with periodic in-person meetings. M.A.N.G.A. begins with year 1 Japanese curriculum. PLEASE NOTE: This is a 3-year program.

Accelerated Chinese Experience (ACE – Mandarin)

Current application grades for ACE are students in grades 6-9. ACE is a hybrid class with live, synchronous online curriculum, with periodic in-person meetings. ACE begins with year 1 Mandarin. PLEASE NOTE: This is a 3-year program.

Amo Linguam Latinam (ALL – Latin)

Current application grades for ALL are students in grades 6-10. ALL is a live, synchronous online course. ALL begins with year 1 Latin.

About Summer Programs

Summer programs have rolling admissions and fill up quickly! Programs may fill before the application deadline. Apply early!

GATE summer programs offer students the chance to experience advanced coursework and the college campus environment alongside their high-achieving peers. Programs include a residential option (when permitted) for grades 7 and above (age 12 and above), as well as a commuter option for all programs.

Summer programs include:

Gifted University for Parents and Precocious Youth (GUPPY)

GUPPY offers a variety of exploratory educational presentations and hands-on experiences to students in grades 3-6 in Michigan State University's laboratories and classrooms. There are several advanced topic "tracks" for students to choose from, each with their own combination of classes. Classes may include fine arts, career exploration, STEAM-based curriculum, and additional skill-based courses meant to introduce young students to a variety of experiences.

GUPPY parents will be invited to attend Parent University where they will hear from experts about teaching, parenting, and advocating for your gifted child.

Intensive Studies for Gifted and Talented (IS4GT)

IS4GT is a one-week advanced residential or commuter program in a specific concentrated curriculum for students in grades 6-11. Previous IS4GT tracks have included Pre-Med ED, writing, and computer programming. Students spend the week with experts in the discipline, rigorously exploring the course topic.

Math, Science, and Technology (MST@MSU)

MST@MSU is a one-week residential or commuter program for students in grades 7-8. There are several advanced topic "tracks" for students to choose from. Each track has 3 classes featuring a combination of math, science, and technology instruction. MST is offered in a wide range of subjects which have previously included computer science, astrophysics, kinesiology, engineering, and more.

Math, Science, Technology, and Leadership (MSTL)

MSTL is a one-week residential or commuter program for students in grades 9-10. This program has previously included advanced topics such as molecular biology, advanced mathematics, and physics. Students will choose tracks that include two courses in either math, science, or technology as well as a leadership workshop. The leadership workshop is designed to introduce students to concepts and skills required to be a good leader and help navigate their transition into college.

Getting Started

GUPPY applicants require:

- Standardized, above-grade level testing (see Testing Minimum charts on page 5)
- **\$75 non-refundable application fee**

All other programs require:

- Standardized, above-grade level testing (see Testing Minimum charts on pages 5 and 6)
- **\$75 non-refundable application fee**
- A teacher recommendation
- Your most recent grade report
- Diagnostic assessment (CHAMP and ISHALL - included in the application)

Students who are not accepted into a program must reapply and pay an additional application fee the next time they apply to a GATE program. Students may not defer their acceptance.

Application Process

Visit gateway.gifted.msu.edu. There you will complete (or update, if you're a returning applicant) a student profile. Once that's done, you can begin your application!

NOTE: Please visit gifted.msu.edu/FAQs for application deadlines

1. Complete your testing early! Testing information can be found at gifted.msu.edu. Each program page has an "Eligibility" page with minimum accepted tests and scores for applying. If you have an above-level test that is not listed, please e-mail gifted@msu.edu to see if we will consider it.
2. Upload your testing and a recent report card to your application. Clear photographs or scanned images of official test scores and report cards are accepted.
3. You will be asked for your teacher's e-mail address within your application. Once submitted, your teacher will receive a link to complete the recommendation form. External letters or recommendations are not accepted.
4. **Pay your \$75 non-refundable application fee at gifted.msu.edu/payment.**

If you are applying for financial aid, you will do so in the application. You must upload the previous year's signed tax return to be considered for aid. Students are limited to receiving one award per lifetime.

*GUPPY applications no longer require teacher recommendation or grade report.

Completed summer applications are reviewed on a rolling basis beginning in April until programs are filled.

Complete academic year applications are reviewed after the first regular deadline, and families will be notified of decisions until programs are filled. If programs still have availability, complete applications will be reviewed after the extended deadline. Once your application has been completed and reviewed, you will receive a decision letter and any other materials via e-mail.

Testing Requirements

All programs require above grade-level testing such as SAT, ACT, CogAT, or NNAT. For more information, visit gifted.msu.edu.

The following charts show minimum test scores required to apply for GATE programs for grades 3 and up.

Only 1 qualifying score per test is required to meet minimum application requirements. For example, a CHAMP applicant needs an ACT score of at least 20 in math or a 21 composite to apply.

- Testing alone does not guarantee your student's acceptance.
- A diagnostic test is required for CHAMP and ISHALL applications.
- A full IQ score report administered by a licensed professional is acceptable for all programs, in place of the tests listed above. For IQ testing information, visit gifted.msu.edu.
- Score requirements are a minimum benchmark to apply for academic year programs.

Test Scores Accepted for the GUPPY Program (Current 3-6th graders)

Program	PSAT 8/9 Math	PSAT 8/9 Reading	NNAT	IOWA	NWEA	MSSTEP	CogAT
GUPPY 3-4	410	410	90th percentile	90th percentile	95th percentile	Level 4	90th percentile
GUPPY 5-6	410	410	90th percentile	90th percentile	95th percentile	Level 4	90th percentile

Note: A full IQ score report is acceptable for all programs, in place of the tests listed above. For IQ testing information, visit gifted.msu.edu. If your scores come close to meeting the stated minimums, we encourage you to apply. The application review process is holistic and will take into consideration all aspects of your application.

Minimum Test Scores Required for GATE Academic Year Programs ** (Current 6th graders and up)

Program	ACT Math	ACT English	ACT Reading	ACT Composite	SAT Math	SAT Evidence-Based Reading and Writing	SAT Total	CogAT ***
CHAMP	20	++	++	21	530	++	1000	90th percentile (Quantitative)
ISHALL	☒	20	20	☒	☒	500	☒	90th percentile (Verbal or Non-Verbal)
ALL	☒	19	19	☒	☒	480	1000	90th percentile (Composite)
M.A.N.G.A.	☒	19	19	☒	☒	480	1000	90th percentile (Composite)

** GATE will accept ACT and SAT subject test scores.

++No minimum score required, but student must exhibit a proficiency for reading and writing comprehension.

*** CogAT scores must be in the 90th percentile in the indicated subtest. Retesting required after 3 years.

Minimum Test Scores Required for GATE Summer Programs (Current 7th graders and up)

Program	Grades	ACT Math	ACT English	ACT Reading	ACT Composite	SAT Math	SAT Evidence-Based Reading and Writing	SAT Total	CogAT **
MST@MSU	7-8	18	18	18	18	480	480	⊗	90th percentile
MSTL	9-10	19	19	19	19	500	500	1000	90th percentile
IS4GT	6-11 <small>varies</small>	18	18	18	18	480	480	⊗	90th percentile

** Retesting required after 3 years.

CogAT

Cognitive Abilities Test

(Administered by MSU GATE)

To REGISTER and for DATES** go to gifted.msu.edu/testing/cogat-testing

Cost: \$59.50 per person

**More dates will be added as needed.

IQ TESTING

For application to GATE programs, an IQ test is acceptable in place of an ACT, SAT, or CogAT tests. To submit an IQ test result for a GATE application to be reviewed, it must include the evaluation in its entirety.

Pat LaPat

Clinical Psychologist

36516 Green Spring
Farmington Hills, MI 48311
Call 248-661-0195 for details

or

2190 N. Woodward
Bloomfield Hills, MI 48301
Call 248-661-0195 for details

Bright Pine

Dr. Katherine Lewitzke, PsyD, LP

Licensed Psychologist and Clinic Director
Call 248-455-6619 for details

MSU Psychological Clinic

316 Physics Rd., Rm 151
East Lansing, MI 48824
Call 517-355-9564 for details

University of Michigan

The University Center for the Child and Family

Call 734-764-9466 for details

Wayne State University

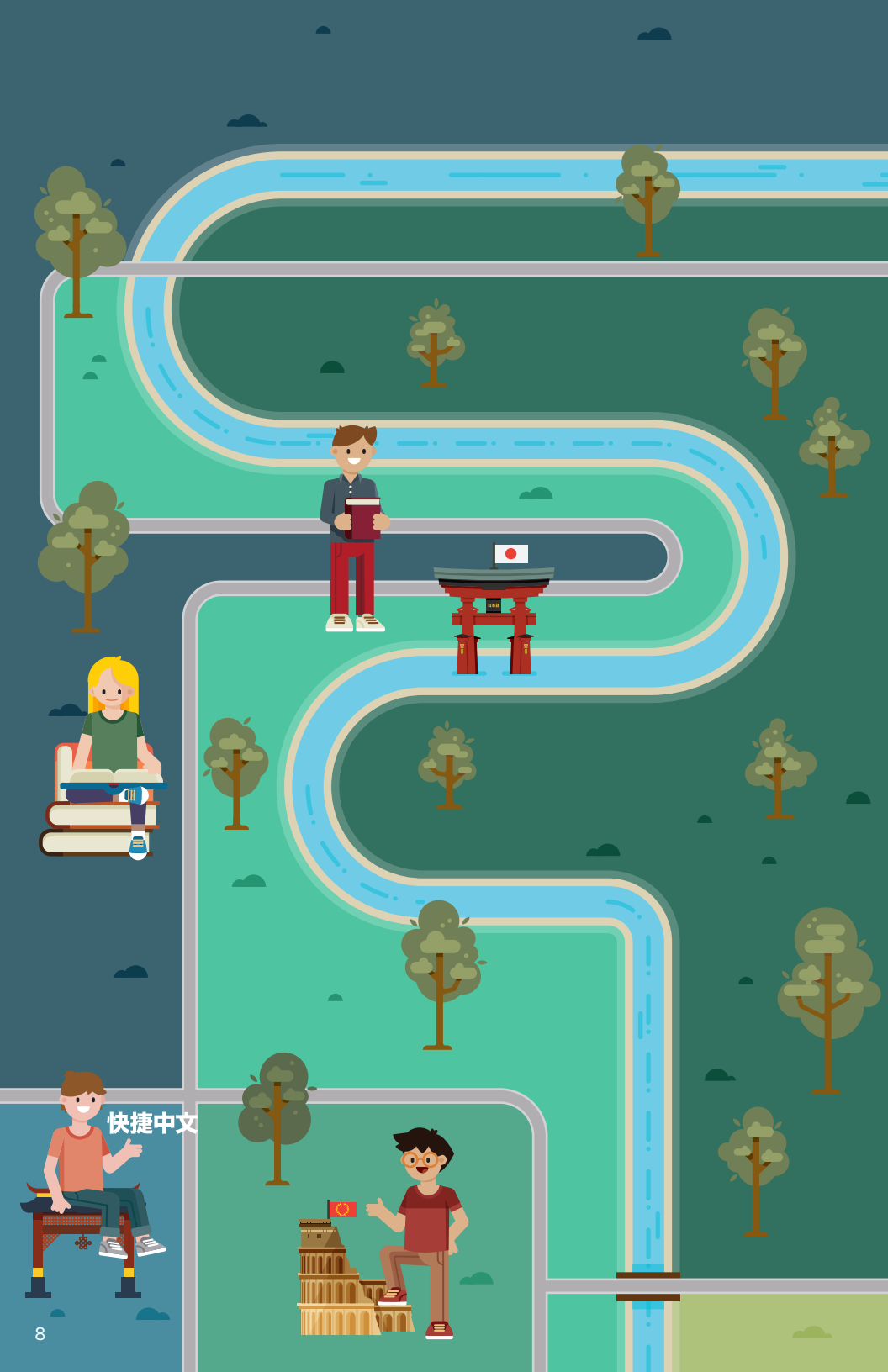
Psychology Clinic

60 Farnsworth St
Detroit, MI 48202
Call 313-577-2840 for details

The cost varies based on the services requested and rendered. Please call provider to inquire about cost.

GATE does not recommend, guarantee, or take any responsibility or liability for the list of organizations above.

For additional information on IQ testing visit
gifted.msu.edu/testing/iq-testing



快捷中文



Academic Year Programs

Our academic year programs challenge gifted middle and high school students in math, literature, and foreign language. Space is limited in academic year programs and the application process is competitive. Programs may fill before the application deadlines.

Apply early!

Academic Year Application Guideline

If you are **currently** in the following grades during application time...

You can apply for the following Academic Year Programs:

Grades 6-9

CHAMP, ACE, or M.A.N.G.A.

Grades 6-10

ISHALL or ALL

Note: Students begin these programs in the Fall of their 7th, 8th, 9th, or 10th grade year. For example, to begin the program in the Fall of 7th grade, students must apply in the Spring of their 6th grade year. Although students may be younger than the grades stated, the nature of the acceleration and the high school level content, no exceptions to younger students will be granted.

For more information on responsibilities, academic integrity, lessons and class structure, and student evaluations, visit gifted.msu.edu/programs/academic-year-programs.

Academic Year Program Details

What to Expect from Your GATE Program

GATE programs are designed to provide educational experiences that allow gifted students to develop intellectually, to cultivate social relationships, and to expand their understanding of the world.

Attendance, participation, and academic probation

Course attendance is mandatory.

Students are allowed 2 absences per semester (2 for Fall, 2 for Spring) and must make up any missed classwork by the next class session. Students who miss more than 2 class sessions will not receive a passing grade for the course and will be removed upon the third absence.

Student attendance includes actively being on time for class and staying for the duration, participating in class discussions, being visible on camera for the duration (during online instruction), and actively engaging with course lessons.

Students who do not actively participate may be placed on academic probation as detailed in the participant handbook.

For the most up to date policy details, please visit

gifted.msu.edu/programs/academic-year-programs/responsibilities-of-participants.

Instructional plan

Students attend one to two classes per week for a total of 2-2.5 hours. The schedule depends on the delivery and location of each course section.

Traditional high school curriculum is taught at an accelerated pace, requiring the student to learn to be motivated and self-guided outside of the classroom to complete substantial homework and be a mature, independent learner.

There are regularly scheduled academic year program labs outside of school hours intended to strengthen a student's understanding of program materials and concepts and to seek additional help as needed from program tutors. Study labs are highly recommended, but optional unless the instructor has required them for your student. This requirement will be communicated to families in advance.

Students will be given an MSU account for the online course website to access academic year program coursework/homework which should be checked daily. Parents must allow students to communicate directly with the academic year program instructor.

Parent-teacher conferences are scheduled mid-semester to give parents an opportunity to communicate in person with the instructor about their student's progress. Progress reports are made available to each student's family midway through the Fall and Spring semesters. Grade reports are distributed to families and the student's school of record at the end of each semester.

Costs and Payment

These fees apply to:

CHAMP (all locations), **ISHALL** (all locations), **ACE**, and **M.A.N.G.A**

Application fees

A non-refundable \$75 application fee is required for each program.

Tuition

Tuition is \$1,590 per year

- \$795 is due within 7 days of program billing to confirm attendance.
- \$795 is due within 14 days of program billing. Please refer to acceptance letter for due dates.

Failure to pay tuition by the due dates will result in immediate withdrawal from the program. No refunds will be given.

Note: Tuition payments are non-refundable. Students accepted within 14 days of the program start will be subject to an abbreviated payment deadline.

Tuition financial aid

Tuition assistance from the GATE office may be available to those with financial need whose home school does not cover the entirety of GATE tuition. Fill out the Financial Aid page of the application when you apply. Parents should also contact their student's school to learn if any financial support is provided by the school. Financial aid recipients qualify to have any textbooks and field trips covered by the GATE office.

Because financial aid funding is limited, families are granted one award per lifetime. Families may apply more than once, but priority is given to students who have not received an award previously. This Financial Aid policy is subject to change.

Material and class supplies financial aid

Fill out the Financial Aid page of the application when you apply. Financial aid recipients will be loaned textbooks for the duration of their program.

School tuition and credit granting process

Many school districts in and around GATE program areas contribute all or part of a student's tuition. Families are responsible for all tuition and fees by the due dates listed in their acceptance materials. Tuition due dates are indicated in the student's decision

letter. If payment is not received by posted due dates, then the student will be withdrawn from the program. All paid tuition or fees are non-refundable.

Your program acceptance materials will ask you to indicate whether or not your student's school contributes to GATE tuition. Please check with your student's school before applying.

Schools are invoiced ONCE a year beginning in November. If a student's school contributes tuition costs or fees, parents will be refunded that amount AFTER the school payment is received, typically these refunds are completed in January.

GATE MSU Academic Programs are conducted as an opportunity for students to gain high school level credit, but they are not considered an honors level course. CHAMP and ISHALL classes are designed to align with Michigan HSCE requirements as well as Common Core. Parents are responsible to communicate with their child's school before applying to any academic program to address the question of issuing credit and placement of their student in their class curriculum and/or schedule. GATE does not guarantee any credit acceptance with any school or district.

NOTE: If your student leaves the program for any reason, the student is responsible for reimbursing the school for the cost of the tuition that they paid on the student's behalf.

How to pay

Payments can be made online at gifted.msu.edu/payment.

Other costs

Parents are responsible for providing transportation, as well as textbooks, classroom supplies, and a TI-84+ calculator for CHAMP students. Some programs may organize optional field trips with attendance costs to be paid by the family. For any virtual programs, students need a computer or laptop that is less than five years old and access to the Internet with a recommended bandwidth of 300 kbps. Please review the technology requirements at gifted.msu.edu/technology-requirements.

If you have financial issues, see our policies at gifted.msu.edu/paying/financial-aid.

Cancellation policy

All classes are subject to a minimum enrollment and may be canceled at the discretion of the GATE office. Your application fee and any paid tuition will be refunded.

Refunds

No fees or tuition will be refunded unless the GATE office cancels the program.

Withdrawals

All requests for withdrawals must be submitted in writing to the Gifted and Talented Education office via e-mail at gifted@msu.edu. No fees or tuition will be refunded.



GATE

GATE Information Meeting

April 16, 2023 • 1-2:30 pm

R.S.V.P. at
gifted.msu.edu/rsvpGATEInfoMeeting2023



Cooperative Highly Accelerated Mathematics Program

(CHAMP – Mathematics)

FALL 2023 – SPRING 2025

CHAMP, in partnership with the Department of Mathematics and University Outreach and Engagement at Michigan State University, provides classroom instruction for qualified, mathematically gifted students applying in grades 6-9.

Important Dates for CHAMP Program

Application deadline: May 19, 2023

Extended deadline: August 3, 2023

Information meeting: April 16, 2023 | 1-2:30 pm



For more information, visit:

gifted.msu.edu/champ

**Class days and times are available on the GATE website, gifted.msu.edu.
Please refer to the GATE website for the most up-to-date class information.**

Students attend one to two classes per week for a total of 2-2.5 hours. The schedule depends on the delivery and location of each course section. Students are expected to attend regularly scheduled academic year program labs outside of class.

CHAMP is designed so that participating students will complete in two years the math content assigned in Michigan High School Content Expectations (HSCE) for all four years of high school and meet the Common Core National Standards. In their first year of CHAMP, students study Algebra 1 and Algebra 2. In the second year, CHAMP students study geometry and a standard pre-calculus course (trigonometry, analytic geometry, college algebra, and a brief introduction to calculus concepts).

Students must begin CHAMP with the study of Algebra 1. Bypassing one or more CHAMP courses is not permitted. Most students completing CHAMP will be prepared to enroll in an honors high school calculus course, an advanced placement (AP) high school calculus course, or a college calculus course.

CHAMP** Schedule

Schedule:	Course:
Semester 1 (Fall, Year 1)	Algebra 1
Semester 2 (Spring, Year 1)	Algebra 2
Semester 3 (Fall, Year 2)	Geometry
Semester 4 (Spring, Year 2)	Pre-Calculus

**See the Academic Year Program details including instructional plans, responsibilities, expectations, and structure at the beginning of this section (pp. 10-12).



Intensive Studies in Humanities, Arts, Language, and Literature

(ISHALL – English)

FALL 2023 – SPRING 2025

ISHALL, in partnership with the Department of English, the Department of Writing, Rhetoric, and American Cultures, and the Office of University Outreach and Engagement at Michigan State University, provides classroom instruction for qualified, gifted language art students applying in grades 6-10.

Important Dates for ISHALL Program

Application deadline: May 19, 2023

Extended deadline: August 3, 2023

Information meeting: April 16, 2023 | 1-2:30 pm



For more information, visit:

gifted.msu.edu/ishall

Class days and times are available on the GATE website, gifted.msu.edu. Please refer to the GATE website for the most up-to-date class information.

Students attend one to two classes per week for a total of 2-2.5 hours. The schedule depends on the delivery and location of each course section. Students are expected to attend regularly scheduled academic year program labs outside of class.

Because students are studying typical high school literature content, ISHALL curriculum may contain mature content that is not appropriate for all students. Parents may ask the GATE office to review a past curriculum example and then determine if their student is ready for the ISHALL curriculum.

ISHALL is designed so that participating students will complete in two years the English content assigned in Michigan High School Content Expectations (HSCE) for all four years of high school as well as meet the Common Core National Standards.

Students must begin ISHALL with the Grade 9 English curriculum. Bypassing one or more courses is not permitted. Most students completing ISHALL will be prepared to enroll in an honors high school English course, an advanced placement (AP) high school English course, or a college English or writing course.

ISHALL** Schedule

Schedule:	Course:
Semester 1 (Fall, Year 1)	Grade 9 English curriculum
Semester 2 (Spring, Year 1)	Grade 10 English curriculum
Semester 3 (Fall, Year 2)	Grade 11 English curriculum
Semester 4 (Spring, Year 2)	Grade 12 English curriculum

**See the Academic Year Program details including instructional plans, responsibilities, expectations, and structure at the beginning of this section (pp. 10-12).



Michigan's Accelerated NihonGo for Americans

(M.A.N.G.A. – Japanese)

FALL 2023 – SPRING 2026

M.A.N.G.A., in partnership with the Office of University Outreach and Engagement at Michigan State University, provides classroom instruction for qualified, gifted students applying in grades 6-9.

Important Dates for M.A.N.G.A. Program

Application deadline: May 19, 2023

Extended deadline: August 3, 2023

Information meeting: April 16, 2023 | 1-2:30 pm



For more information, visit:

gifted.msu.edu/manga

**Class days and times are available on the GATE website, gifted.msu.edu.
Please refer to the GATE website for the most up-to-date class information.**

The GATE Japanese Program offers a technology-enhanced format. Students will be required to attend live, synchronous, virtual instruction via Zoom. Throughout the year, students will be able to seek additional assistance via regularly scheduled virtual labs.

M.A.N.G.A. is designed so that the participating students can complete in three years the Japanese language content assigned in Michigan High School Content Expectations (HSCE) for all four years of high school. Every semester of the GATE Japanese program corresponds to one year of high school Japanese.

Students must begin M.A.N.G.A. with the Grade 9 Japanese curriculum. Bypassing one or more courses is not permitted. Students completing M.A.N.G.A. will be prepared to take the Japanese Language and Culture advanced placement (AP) exam, or a college Japanese course. Students must register for the AP exam via their home school. GATE does not facilitate AP test enrollment.

M.A.N.G.A. ** Schedule

Schedule:	Course:
Semester 1 (Fall, Year 1)	Japanese 1
Semester 2 (Spring, Year 1)	Japanese 2
Semester 3 (Fall, Year 2)	Japanese 3
Semester 4 (Spring, Year 2)	Japanese 4
Semester 5 (Fall, Year 3)	AP Japanese
Semester 6 (Spring, Year 3)	AP Japanese

**See the Academic Year Program details including instructional plans, responsibilities, expectations, and structure at the beginning of this section (pp. 10-12).



Amo Linguam Latinam

(ALL – Latin)

FALL 2023 – SPRING 2025

ALL, in partnership with the Department of Writing, Rhetoric, and American Cultures, and the Office of University Outreach and Engagement at Michigan State University, provides classroom instruction for qualified world language students in grades 7-11.

Important Dates for ALL Program

Application deadline: May 19, 2023

Extended deadline: August 3, 2023

Information meeting: April 16, 2023 | 1-2:30 pm



For more information, visit:

gifted.msu.edu/all

**Class days and times are available on the GATE website, gifted.msu.edu.
Please refer to the GATE website for the most up-to-date class information.**

The GATE Latin Program offers a technology-enhanced format. Students will be required to attend live, synchronous, virtual instruction via Zoom. A significant portion of the material will also be available on the course website for asynchronous learning. Throughout the year, students will be able to seek additional assistance via regularly scheduled virtual labs.

ALL is designed so that the participating students can complete in two years the Latin language content assigned in Michigan High School Content Expectations (HSCE) for all four years of high school. Every semester of the GATE Latin program corresponds to one year of high school Latin.

Students must begin ALL with the Grade 9 Latin curriculum. Bypassing one or more courses is not permitted. Students completing ALL will be prepared to take the advanced placement (AP) Latin exam, or a college Latin course. Students must register for the AP exam via their home school. GATE does not facilitate AP test enrollment.

ALL** Schedule

Schedule:	Course:
Semester 1 (Fall, Year 1)	Latin 1
Semester 2 (Spring, Year 1)	Latin 2
Semester 3 (Fall, Year 2)	Latin 3
Semester 4 (Spring, Year 2)	Latin 4

**See the Academic Year Program details including instructional plans, responsibilities, expectations, and structure at the beginning of this section (pp. 10-12).



Accelerated Chinese Experience

(ACE – Chinese)

FALL 2023 – SPRING 2026

ACE, in partnership with the College of Education and the Office of University Outreach and Engagement at Michigan State University, provides classroom instruction for qualified world language students in grades 6-10.

ACE is on hiatus for Fall 2023. Please check back in January 2024 for the ACE program information.



For more information, visit:

gifted.msu.edu/ace

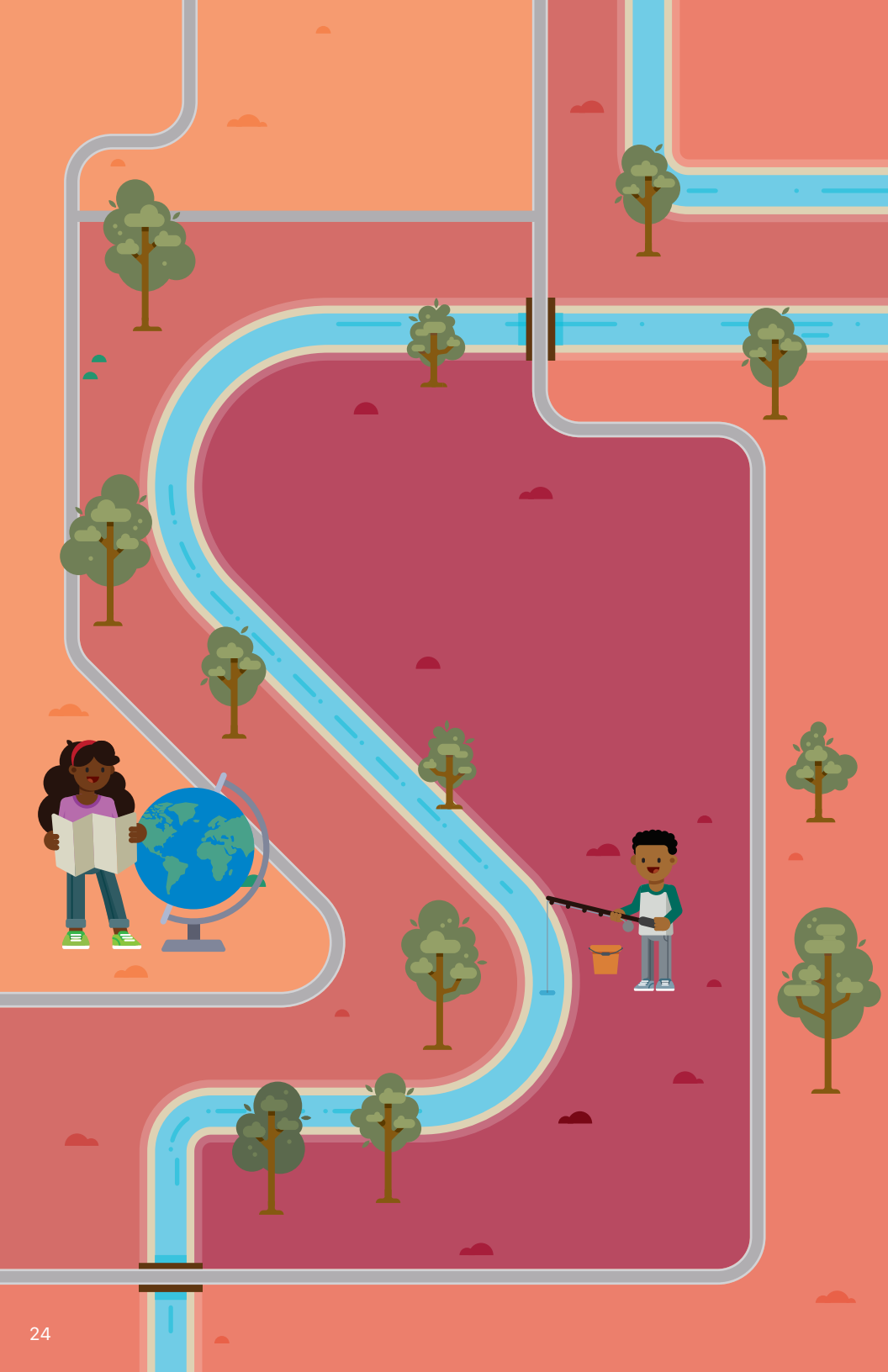


MSU Non-Discrimination Statement

MSU's Anti-Discrimination Policy prohibits acts of discrimination and harassment against any university community member(s) by inappropriately limiting employment opportunities, access to university residential facilities, or participating in educational, athletic, social, cultural, or other university activities on the basis of age, color, gender, gender identity, disability, height, marital status, national origin, political persuasion, race, religion, sexual orientation, veteran status, or weight. Complaints under this policy may be submitted to the Office of Institutional Equity for investigation.

MICHIGAN STATE
UNIVERSITY







Summer Programs

GATE Summer programs offer students the chance to experience advanced non-credit coursework and the college campus environment alongside their high-achieving peers. Summer program applications are reviewed on a rolling basis and classes fill up quickly. **Apply early!**

Summer Programs Application Guideline

See gifted.msu.edu for grade-level requirements.

If you are currently in...	...you can apply for the following Summer Programs:
Grades 3 or 4	GUPPY 3-4
Grade 5	GUPPY 5-6
Grade 6	GUPPY 5-6, IS4GT: Intensive Studies
Grade 7-9/10	MST@MSU, IS4GT: Intensive Studies:
Grade 9-10	MSTL, IS4GT: Intensive Studies:



Summer Program Details

Costs and Payment

These fees apply to:
GUPPY, IS4GT, MST, and MSTL

Application fee

All programs require a \$75 non-refundable application fee.

Please note that this fee must be paid **BEFORE** any information is shared or reviewed on your application.

Tuition

Tuition amounts and deadlines are detailed in student's acceptance letters. Standard payment structure is 50% due within 7 days of acceptance, remaining 50% due within 14 days of acceptance. **Students accepted within 14 days of the program start will be subject to an abbreviated payment deadline.**

.....

GUPPY

\$350 – per session

If you attend an AM and PM session during the same week (Monday-Friday), the cost is discounted to \$650 for the week.

.....

IS4GT, MST@MSU, and MSTL

Commuter: **\$895** - includes lunches

Residential: **\$1,995**

Additional fees

- Some tracks will include a \$25 supply fee. See gifted.msu.edu for details.
- A \$25 change fee will be assessed to any track changes after acceptance (where permitted).
- A \$25 late payment fee will be assessed to any payment posted after 11:59 pm EST on the payment due date

Tuition financial aid

Tuition assistance from the GATE office may be available to those with financial need. Fill out the Financial Aid page of the application when you apply.

Because financial aid funding is limited, families are granted one award per lifetime. This financial aid policy is subject to change.

How to pay

Payments can be made online at gifted.msu.edu/payment.

Cancellation policy

All programs, or classes within a program, may be subject to a minimum enrollment of students and may be canceled at the discretion of the GATE office. Additionally, the residential portion of the programs may be canceled if there are not enough residential students enrolled. Any applicable fees and/or tuition will be refunded.

Refunds and drops

The application fee of \$75 is non-refundable.

All requests for withdrawals for summer programs must be submitted in writing to the Gifted and Talented Education office via e-mail at gifted@msu.edu. No fees or tuition will be refunded.

A student may only leave the program in case of emergency. In such a case, the student should take all personal belongings with them as they will be considered withdrawn from the program. No refunds will be given.

FAQs

For Summer program FAQs, visit gifted.msu.edu/about/faqs.



Gifted University for Parents and Precocious Youth (GUPPY)

GUPPY is a week or weekend program offering students in grades 3-6 a variety of accelerated exploratory educational presentations and hands-on experiences in Michigan State University's laboratories and classrooms.

Important Dates for GUPPY Program

All M-F GUPPY programs have an AM, PM, or all-day option.

All weekend programs are all-day only.

M-F Programs

- June 19-23, 2023
- June 26-30, 2023
- July 10-14, 2023
- July 17-21, 2023

Weekend Programs

- June 23-25, 2023
- July 7-9, 2023



Application deadline: May 19, 2023

For more information, visit:

gifted.msu.edu/guppy

GUPPY is designed for young gifted and talented students to attend classes taught by MSU faculty and subject experts at Michigan State University. This GATE program offers young, gifted students a variety of accelerated exploratory educational presentations and hands-on experiences in MSU's laboratories and classroom.

GUPPY "tracks" are intended to give young students an introduction to a variety of subjects to help them determine future areas of interest. As such, GUPPY tracks will offer a plethora of options and tracks may not always consist of a dedicated subject area. Many class options are STEAM-based and other courses offer unique educational opportunities that most gifted students in this demographic may not normally have the chance to access and participate in on a top-ten university campus. Applicants may mix and match AM and PM tracks to get a customized learning experience.

GUPPY applicants only require a qualifying above grade-level test and the application fee to complete their application.

Parent Enrichment Opportunities

Parent University

GUPPY's Parent University provides presentations about gifted children by experts. Various topics related to gifted education and raising a gifted child will be discussed. Past topics have included: Gifted 101, Roadmap to Advocacy, IQ Testing, and Spatial Learners. All GUPPY parents are welcome to attend the Parent U session. Please check the GUPPY webpage for the most up-to-date information on Parent University schedule details. All GUPPY parents will be notified of this opportunity and will be invited as a part of program participation.

Private Parent Facebook

GATE offers a private Facebook group for all summer and academic year participating families. Families can arrange carpool, evening and weekend activities, ask questions of GATE staff, and network with other families. GATE staff cross-post e-mail announcements and notices here as well. Upon acceptance, families will be notified of the group name and will have to answer admission questions to verify your student's accepted status.

Commuting and Lodging

Local families commute by dropping off and picking up their student each day from campus. For out-of-the-area families, staying nearby in East Lansing may offer a unique opportunity to access gifted programming on the beautiful MSU campus. Families may stay in the area and connect with other gifted students and make contacts to stay in touch. GATE will provide accepted families a list of local hotel accommodations, many of which will be available at a discounted rate for GUPPY families.

GUPPY 3-4 Track Options

Students in Grades 3-4 will take the classes in one of the tracks below. Space is limited, and each track will be filled on a first-come first-served basis.

For full descriptions, see gifted.msu.edu/guppy.

Please see sample schedule below. Not all classes listed will be available, this is meant to be a sample of class variety and times. Check website for track classes and descriptions.

GUPPY Sample AM Schedule (M-F)

Track	Class 1 8:45 – 9:45 am	Class 2 10:00 – 11:00 am	Class 3 11:15 am – 12:15 pm
A	Nuclear Astrophysics	Ancient Mathematics	Conservation Biology

GUPPY Sample PM Schedule (M-F)

Track	Class 1 1:30 – 2:30 pm	Class 2 2:45 – 3:45 pm	Class 3 4:00 – 5:00 pm
P	Theatre Arts	Cookie Decorating	Spanish

GUPPY Sample Weekend Schedule

Track	Class 1 8:45 – 10:25 am	Class 2 10:40 am – 12:20 pm	Lunch and Coordinated Activity Time	Class 3 1:50 – 3:30 pm
W	Tampering with triangles	Computer Coding		Watercolor Art



Pioneer



Innovate



Engage

MICHIGAN STATE
UNIVERSITY

Honors College

honorscollege.msu.edu



Intensive Studies for Gifted and Talented (IS4GT)

A one-week advanced program in a specific concentrated curriculum, IS4GT is an option for gifted students in grades 6-11.

Important Dates for IS4GT Program

Application deadline: May 19, 2023

Information meeting: April 16, 2023 | 1-2:30 pm



For more information, including course descriptions, visit:

gifted.msu.edu/is4gt

Tracks are comprised of one area of focus and will feature lectures, presentations, and hands-on experiences from experts in that field of study. Students will have an opportunity to get in-depth-knowledge and exposure to a concentrated topic.

IS4GT is meant for students who have a profound interest in the topic offered, or for students who are considering a career in that area and want to learn more. IS4GT is a great opportunity for students to access resources at MSU, experience college life, and simultaneously learn with other gifted students.

Previous IS4GT tracks have included Pre-Med, Pre-Law, Creative Writing, and Animation. Please see a sample course description below. Not all classes listed will be available, this is meant to be a sample of class variety and times. Check website for available classes and descriptions.

.....

PRE-MED ED

Grades 7-9

This program is intended for students interested in the health care field. Students will:

- discover medical specialties through hands-on demonstrations and activities, such as intubation, physical therapy, respiratory therapy, and dissections.
- learn whole body anatomy, physiology, and integrated body systems to see how all the different systems in the body work together.
- explore the life of CPR and emergency medical response professionals.
- learn about pharmacology and how drugs interact with the body and living systems.
- learn about the different approaches of medicine: allopathic (MD) and osteopathic (DO).
- have the opportunity to explore subspecialties within the field of medicine.



Math, Science, and Technology (MST@MSU)

MST@MSU is a one-week residential or commuter program for students in grades 7-8. There are several advanced topic tracks for students to choose from. Each track has 3 classes featuring a combination of math, science, and technology instruction. MST is offered in a wide range of subjects which have previously included computer science, astrophysics, kinesiology, engineering, and more. To be eligible for the residential option, students must be a minimum age of 12 years old by program start date.

Important Dates for MST Program

MST Program Dates: July 10 – 22, 2023

Application deadline: May 19, 2023

Information meeting: April 16, 2023 | 1-2:30 pm



For more information, including course descriptions, visit:

gifted.msu.edu/mst

The program is held at the MSU campus and offers a variety of topics within mathematics, science, and technology, focusing on real-world applications. The goal is to match the intellectual abilities of talented students with rigorous and challenging course work, which provides enrichment but does not duplicate or accelerate course work that is part of the regular middle school curriculum.

MST participants choose a dedicated track that consists of 3 classes focused on a variety of STEM-based learning opportunities. The course curriculum is comprised of feature lectures, presentations, and hands-on experiences from experts in that field(s) of study.

MST Sample Schedule

Please see sample schedule below. Not all classes listed will be available, this is meant to be a sample of class variety and times. Check website for track classes and descriptions.

Track	Class 1 9:00 – 11:00 am	Class 2 12:30 – 2:30 pm	Class 3 3:00 – 5:00 pm
1	Kinesiology	Nuclear Astrophysics	Computer Programming



Math, Science, Technology, and Leadership (MSTL)

MSTL is a one-week residential or commuter program for students in grades 9-10. This program has previously included advanced topics such as molecular biology, advanced mathematics, and physics. Students will choose tracks that include two courses in either math, science, or technology as well as a leadership workshop. The leadership workshop is designed to navigate their college journey. To be eligible for the residential option, students must be a minimum age of 12 years old by program start date.

Important Dates for MSTL Program

MSTL Program Dates: July 10 – 14, 2023

Application deadline: May 19, 2023

Information meeting: April 16, 2023 | 1-2:30 pm



For more information, including course descriptions, visit:

gifted.msu.edu/mstl

The MSTL program offers advanced curriculum designed to stimulate students to learn about new developments in mathematics, science, and technology, and to explore related career fields. MSTL is a chance for early high school students to experience on campus resources, be exposed to MSU instructors, and work towards a better understanding of opportunities for their future educational endeavors.

For more comprehensive class details, go to gifted.msu.edu/programs/summer-programs/mstl/class-options.

MSTL Sample Schedule

Please see sample schedule below. Not all classes listed will be available, this is meant to be a sample of class variety and times. Check website for track classes and descriptions.

Track	Class 1 9:00 – 11:00 am	Class 2 12:30 – 2:30 pm	Class 3 3:00 – 5:00 pm
1	Molecular Biology	Physics	Leadership Course

MICHIGAN STATE UNIVERSITY

SCIENCE FESTIVAL

APRIL 1-30, 2023

In-person events
on MSU's campus
and statewide

ALL EVENTS FREE



sciencefestival.msu.edu



MICHIGAN STATE UNIVERSITY

spartan youth programs

**Camps, Courses, Places to Visit,
Programs, and Other Activities
for Kids of All Ages**

(Pre-K through 12th Graders)

What is SYP?

An online catalog of **exciting opportunities for pre-K through 12th graders** to improve their knowledge and skills in specific subject areas. Pre-college programs are an excellent way for students to explore majors or careers while being introduced to the college environment.

With **over 200 listings** covering topics in agriculture, art, business, computers, engineering, math, music, science, sports, and writing, MSU is sure to have a **program for every student!**

You can search the SYP website for:

- summer and school year programs
- opportunities to earn college credit
- residential experiences on the MSU campus
- financial assistance
- study abroad possibilities

For more information, visit

spartanyouth.msu.edu

MICHIGAN STATE
U N I V E R S I T Y

Gifted and Talented Education
University Outreach and Engagement

Kellogg Center
219 S. Harrison Rd., Rm 8
East Lansing, MI 48824

For more information on any of our programs, please visit
GIFTED.MSU.EDU